

# Global View

site Laboratory satellite systems  
 abbreviation NAU  
 country Ukraine  
 city Kiev  
 comment Konin V., Shyshkov F. InsideGNSS, Jan-Feb 2015,  
 P.50 - 54  
 program Pegasus  
 version 4.8.4  
 date 17/04/2016

## SBAS Messages

**start:** 05:10:31.129 14.04.2016 ( week: 1892 sec: 364231.129 )  
**end:** 12:25:59.129 14.04.2016 ( week: 1892 sec: 390359.129 )  
**duration:** 07:15:28 ..

### quality

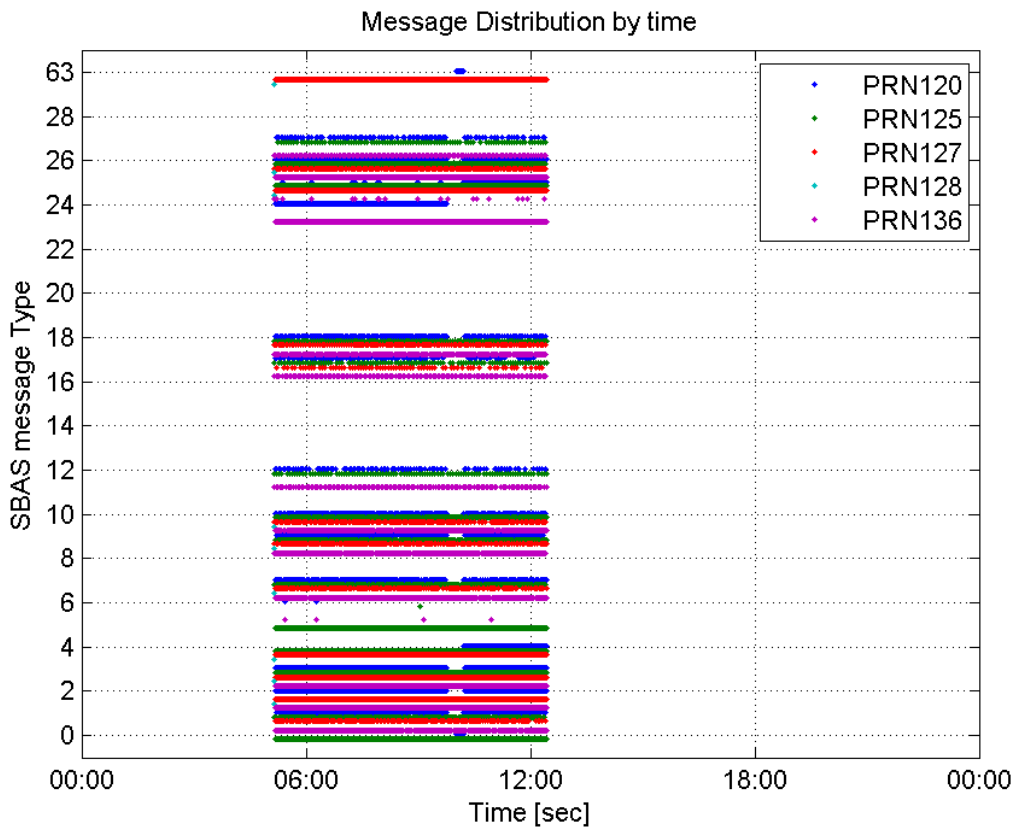
**valid samples** 83729  
**total samples** 83729  
**number of SBAS PRNs** 5

### SBAS SIS Overview

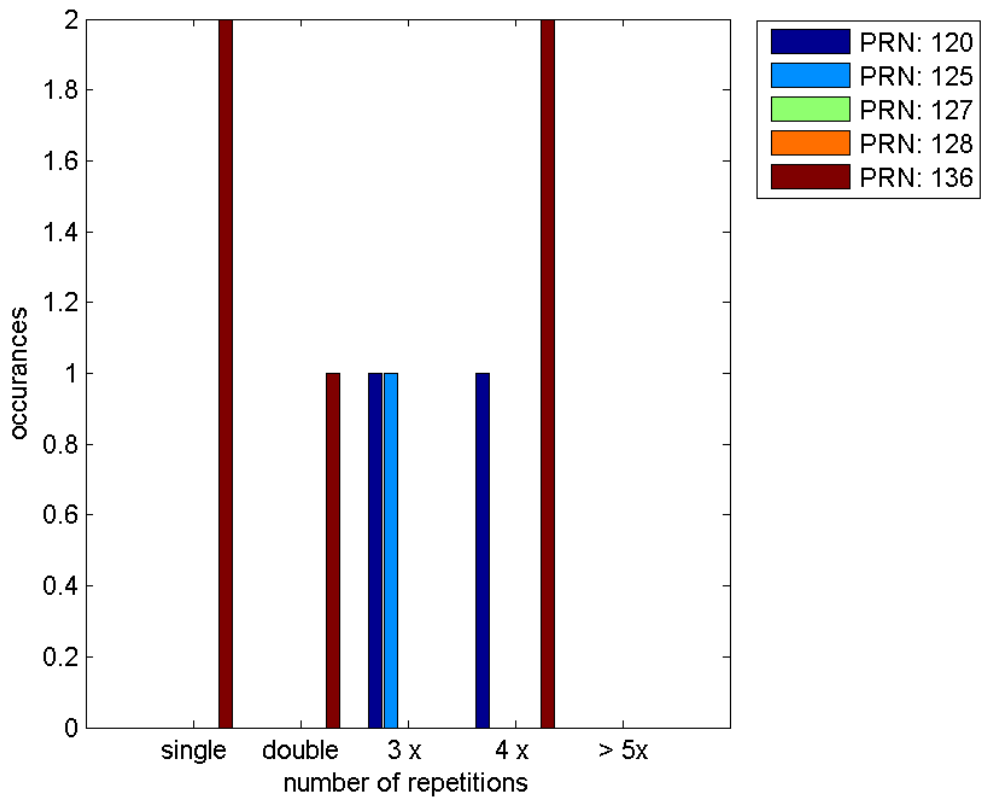
#### Message Type 6 repetitions :

	single	double	3 x	4 x	> 5x
<b>PRN 120</b>	0	0	1	1	0
<b>PRN 125</b>	0	0	1	0	0
<b>PRN 127</b>	0	0	0	0	0
<b>PRN 128</b>	0	0	0	0	0
<b>PRN 136</b>	2	1	0	2	0

#### Message Distribution by time:



**Message Type 6 repetitions:**



## Broadcast SBAS Messages :

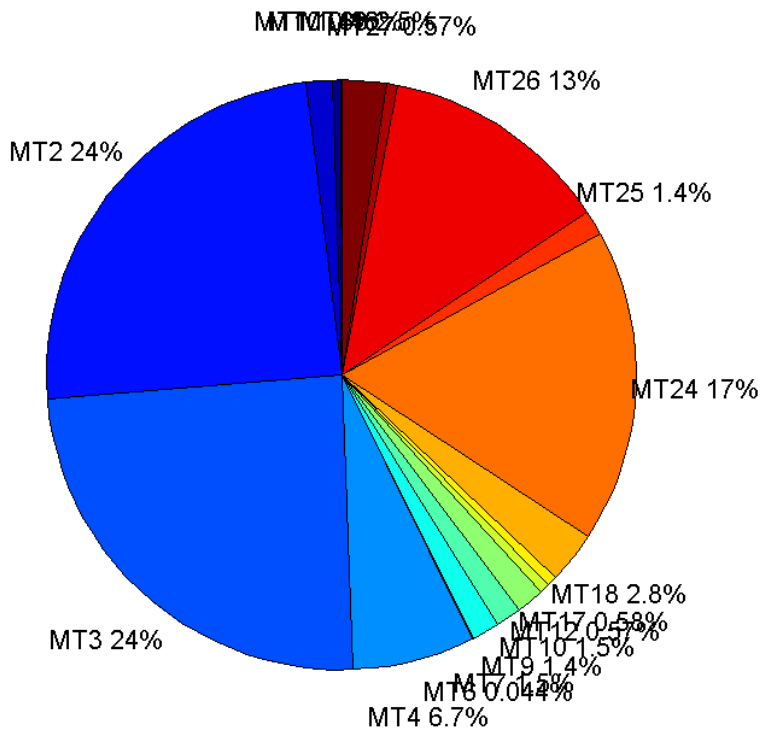
	number of messages	%
MT 0	83	0.459808
MT 1	260	1.44036
MT 2	4410	24.4308
MT 3	4380	24.2646
MT 4	1215	6.73093
MT 5	0	0
MT 6	8	0.0443189
MT 7	275	1.52346
MT 9	253	1.40158
MT 10	271	1.5013
MT 12	103	0.570606
MT 17	104	0.576145
MT 18	504	2.79209
MT 24	3100	17.1736
MT 25	256	1.4182
MT 26	2283	12.6475
MT 27	102	0.565066
MT 28	0	0
MT 62	0	0
MT 63	444	2.4597
<b>Total</b>	18051	100

## Update intervals :

	Minimum [s]	Maximum [s]	Mean value	Exceed Max update	Exceed NPA timeout	Exceed PA timeout
MT 0	6	24	8.41463	22	0	0
MT 1	1	1650	100.278	79	1	1
MT 2	3	1692	5.92447	1265	21	99
MT 3	3	1677	5.96689	1320	21	80
MT 4	3	24	6.55272	577	13	47
MT 5	--	--	--	--	--	--
MT 6	1	2982	426.857	1	1	1
MT 7	61	1753	95.2409	63	2	5
MT 9	61	1763	102.127	0	0	0
MT 10	64	1670	96.3593	68	1	7
MT 12	156	1842	255.304	102	15	26
MT 17	156	2382	241.447	0	0	0
MT 18	1	1686	51.7555	2	0	0
MT 24	4	36	5.3272	0	0	0
MT 25	1	3961	99.7137	0	0	0
MT 26	1	1657	11.4514	0	0	0
MT						

27	156	1780	256.079	0	0	0
MT 28	--	--	--	--	--	--
MT 62	--	--	--	--	--	--
MT 63	1	6	1.55305	0	0	0

**Message Distribution PRN 120:**



**SBAS SIS Analysis**

PRN 125

**Broadcast SBAS Messages :**

	number of messages	%
MT 0	4640	18.9064
MT 1	237	0.965691
MT 2	0	0
MT 3	4663	19.0001
MT 4	4620	18.8249
MT 5	4650	18.9471
MT 6	4	0.0162986
MT 7	239	0.973841
MT 9	241	0.98199
MT 10	241	0.98199
MT 12	99	0.40339
MT 17	97	0.395241

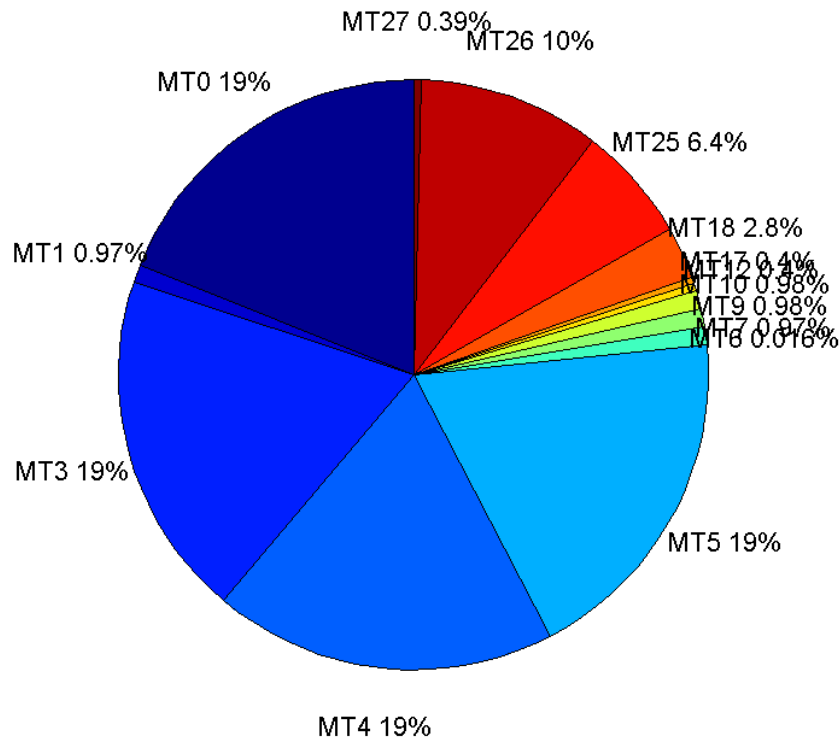
MT 18	690	2.81151
MT 24	0	0
MT 25	1572	6.40535
MT 26	2453	9.99511
MT 27	96	0.391166
MT 28	0	0
MT 62	0	0
MT 63	0	0
<b>Total</b>	24542	100

## Update intervals :

	Minimum [s]	Maximum [s]	Mean value	Exceed Max update	Exceed NPA timeout	Exceed PA timeout
MT 0	5	25	5.63246	267	0	0
MT 1	99	303	110.199	19	0	0
MT 2	--	--	--	--	--	--
MT 3	5	26	5.60425	252	2	24
MT 4	5	20	5.65555	295	1	25
MT 5	5	22	5.62013	250	6	36
MT 6	1	1	1	0	0	0
MT 7	96	303	109.714	20	0	1
MT 9	98	202	108.746	0	0	0
MT 10	98	204	108.867	19	0	0
MT 12	239	502	267.694	98	7	97
MT 17	242	750	273.271	0	0	0
MT 18	1	225	38.074	0	0	0
MT 24	--	--	--	--	--	--
MT 25	1	71	16.6314	0	0	0
MT 26	1	81	10.6325	0	0	0
MT 27	243	754	270.979	0	0	0
MT 28	--	--	--	--	--	--
MT 62	--	--	--	--	--	--
MT 63	--	--	--	--	--	--

---

Message Distribution PRN 125:



## SBAS SIS Analysis

PRN 127

## Broadcast SBAS Messages :

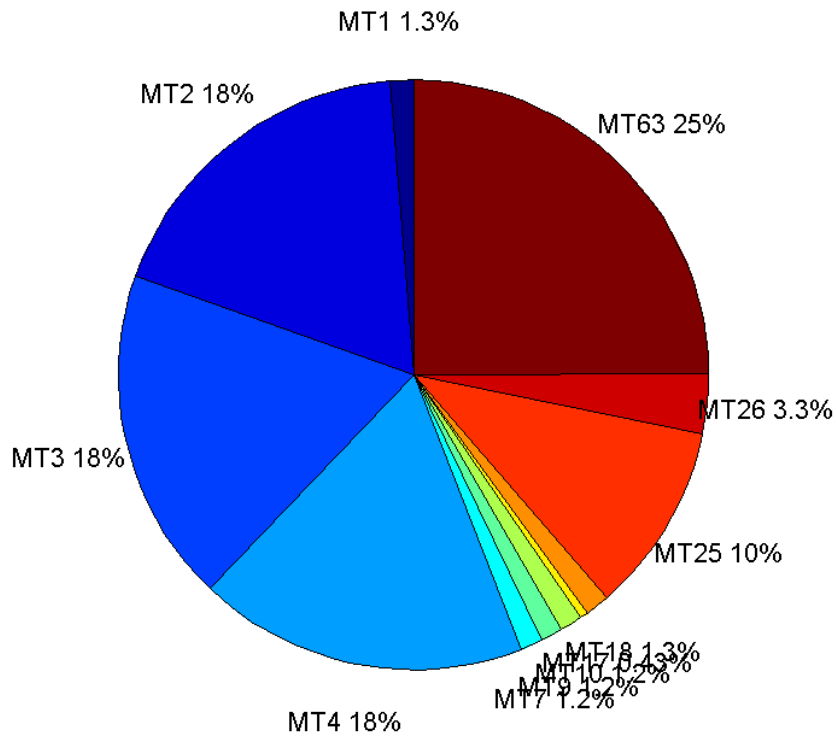
	number of messages	%
MT 0	0	0
MT 1	212	1.25548
MT 2	3095	18.3288
MT 3	3096	18.3347
MT 4	3048	18.0505
MT 5	0	0
MT 6	0	0
MT 7	199	1.17849
MT 9	209	1.23771
MT 10	205	1.21402
MT 12	0	0
MT 17	73	0.432311
MT 18	226	1.33839
MT 24	0	0
MT 25	1764	10.4465
MT 26	552	3.26898
MT 27	0	0
MT 28	0	0
MT 62	0	0
MT 63	4207	24.9141
<b>Total</b>	<b>16886</b>	<b>100</b>

## Update intervals :

	Minimum [s]	Maximum [s]	Mean value	Exceed Max update	Exceed NPA timeout	Exceed PA timeout
MT 0	--	--	--	--	--	--
MT 1	36	599	123.18	59	0	0
MT 2	6	66	8.43956	842	93	275
MT 3	6	54	8.44071	862	77	268
MT 4	6	42	8.57368	895	85	291
MT 5	--	--	--	--	--	--
MT 6	--	--	--	--	--	--
MT 7	30	551	131.909	54	3	24
MT 9	66	426	126.01	0	0	0
MT 10	48	553	127.853	56	5	17
MT 12	--	--	--	--	--	--
MT 17	242	1073	355.528	0	0	0
MT 18	1	445	116.138	5	0	0
MT 24	--	--	--	--	--	--
MT 25	1	85	14.8236	0	0	0
MT 26	1	240	47.3902	0	0	0
MT 27	--	--	--	--	--	--
MT 28	--	--	--	--	--	--
MT 62	--	--	--	--	--	--
MT 63	1	47	6.21255	0	0	0

---

Message Distribution PRN 127:



SBAS SIS Analysis

PRN 128

Broadcast SBAS Messages :

	number of messages	%
MT 0	0	0
MT 1	0	0
MT 2	1	11.1111
MT 3	1	11.1111
MT 4	1	11.1111
MT 5	0	0
MT 6	0	0
MT 7	1	11.1111
MT 9	1	11.1111
MT 10	1	11.1111
MT 12	0	0
MT 17	0	0
MT 18	0	0
MT 24	0	0
MT 25	1	11.1111
MT 26	1	11.1111
MT 27	0	0
MT 28	0	0
MT 62	0	0
MT 63	1	11.1111
<b>Total</b>	<b>9</b>	<b>100</b>

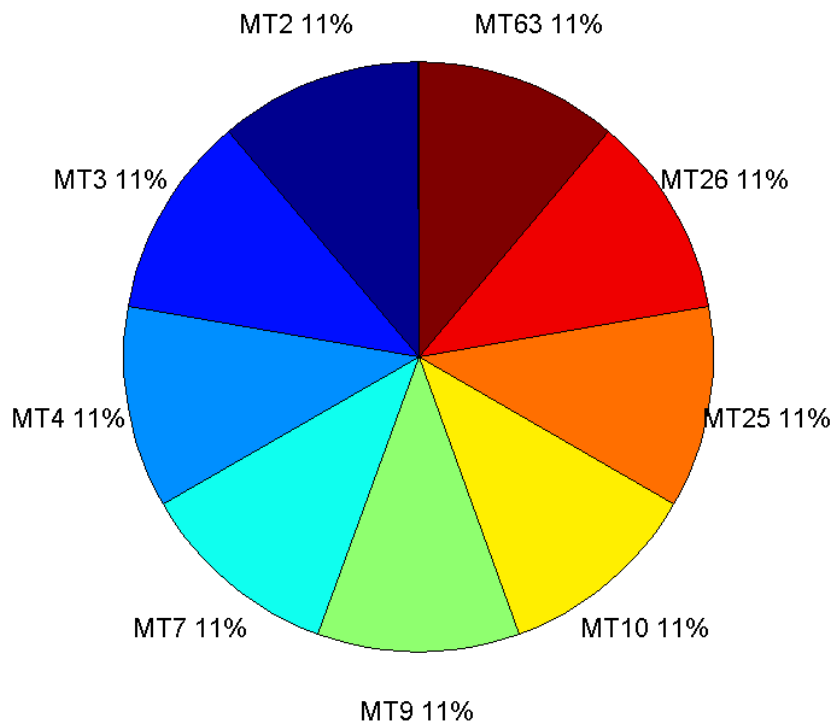


## Update intervals :

	Minimum [s]	Maximum [s]	Mean value	Exceed Max update	Exceed NPA timeout	Exceed PA timeout
MT 0	--	--	--	--	--	--
MT 1	--	--	--	--	--	--
MT 2	--	--	--	--	--	--
MT 3	--	--	--	--	--	--
MT 4	--	--	--	--	--	--
MT 5	--	--	--	--	--	--
MT 6	--	--	--	--	--	--
MT 7	--	--	--	--	--	--
MT 9	--	--	--	--	--	--
MT 10	--	--	--	--	--	--
MT 12	--	--	--	--	--	--
MT 17	--	--	--	--	--	--
MT 18	--	--	--	--	--	--
MT 24	--	--	--	--	--	--
MT 25	--	--	--	--	--	--
MT 26	--	--	--	--	--	--
MT 27	--	--	--	--	--	--
MT 28	--	--	--	--	--	--
MT 62	--	--	--	--	--	--
MT 63	--	--	--	--	--	--

---

Message Distribution PRN 128:



**SBAS SIS Analysis**

PRN 136

**Broadcast SBAS Messages :**

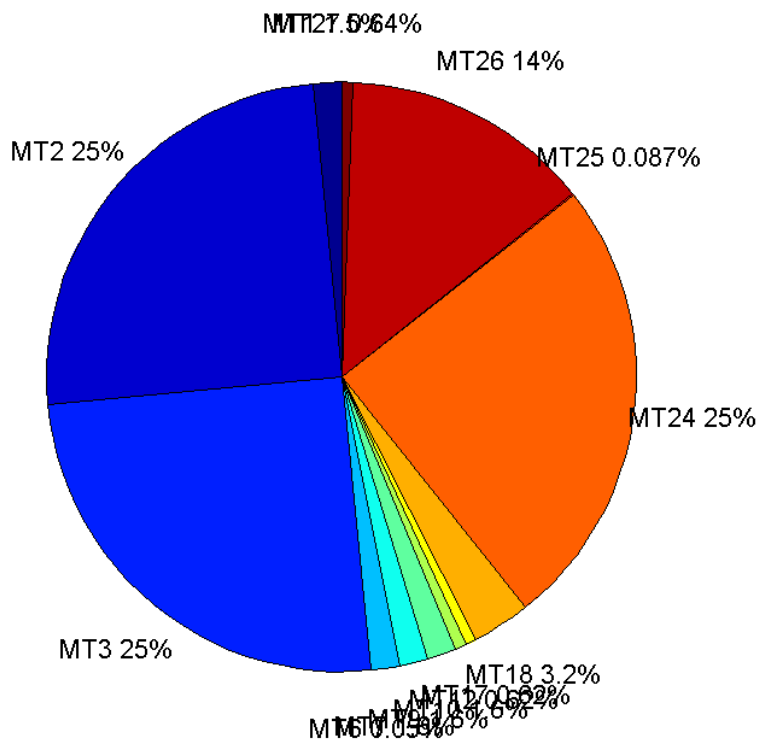
	number of messages	%
MT 0	0	0
MT 1	374	1.54284
MT 2	6047	24.9453
MT 3	6080	25.0815
MT 4	0	0
MT 5	0	0
MT 6	12	0.0495029
MT 7	378	1.55934
MT 9	377	1.55522
MT 10	382	1.57584
MT 12	151	0.622912
MT 17	150	0.618786
MT 18	765	3.15581
MT 24	6034	24.8917
MT 25	21	0.0866301
MT 26	3314	13.6711
MT 27	156	0.643538
MT 28	0	0
MT 62	0	0
MT 63	0	0
<b>Total</b>	24241	100

## Update intervals :

	Minimum [s]	Maximum [s]	Mean value	Exceed Max update	Exceed NPA timeout	Exceed PA timeout
MT 0	--	--	--	--	--	--
MT 1	64	192	70.1019	31	0	0
MT 2	4	16	4.32104	413	0	10
MT 3	4	20	4.29824	373	3	13
MT 4	--	--	--	--	--	--
MT 5	--	--	--	--	--	--
MT 6	1	10295	1799.36	3	3	3
MT 7	64	256	69.3581	26	0	1
MT 9	64	192	69.3723	0	0	0
MT 10	64	192	68.4619	24	0	0
MT 12	157	480	174.32	150	1	12
MT 17	156	327	175.49	0	0	0
MT 18	4	148	34.2251	0	0	0
MT 24	4	20	4.33052	0	0	0
MT 25	69	3961	1303.8	0	0	0
MT 26	4	52	7.88651	0	0	0
MT 27	160	321	168.723	0	0	0
MT 28	--	--	--	--	--	--
MT 62	--	--	--	--	--	--
MT 63	--	--	--	--	--	--

---

Message Distribution PRN 136:



### Parameters

#### System

Name	Section	Value
Name	System	Convertor
Version	System	4.3
Inputfile	System	D:/PegasusDateJob/job/2016_04_14EGNOS615/01_User/01_User
Outputfile	System	D:/PegasusDateJob/job/2016_04_14EGNOS615/02_Convertor/02_Convertor

#### Configuration

Name	Section	Value
Receiver	Configuration	Novatel OEM4
Leap_Seconds	Configuration	17
Correction_mode	Configuration	SBAS MODE 0/2
Dual_Frequency	Configuration	no

### Position Domain

**start:** 05:10:33.5 14.04.2016 ( week: 1892 sec: 364233.5 )  
**end:** 12:26:00 14.04.2016 ( week: 1892 sec: 390360 )  
**duration:** 07:15:28 ..

#### quality

**valid samples** 86653  
**total samples** 87863

## Event tables

**Position discontinuity events type** too many (54)  
**APV-I discontinuity events type** too many (97)  
**APV-35m discontinuity events type** too many (96)  
**LPV-200 discontinuity events type** too many (96)  
**CAT-I discontinuity events type** nothing

extremes :

	Epoch	HPE	HPL	HPE/HPL	VPE	VPL	VPE/VPL
max normHor	368359	1.61075	9.15744	0.175896	-0.141497	15.1627	0.00933189
max normVer	369079	1.88055	17.1372	0.109735	3.28646	22.2691	0.147579
max HPE	375488	43.525	988.333	0.0440388	14.5799	283.973	0.0513426
max VPE	377594	9.71596	478.487	0.0203056	-16.4264	681.556	0.0241013
min HPL	368239	1.12757	9.12246	0.123604	0.494947	15.2073	0.0325466
min VPL	384257	0.661907	9.86686	0.0670838	1.24344	13.1071	0.0948678

## First Glance analysis

**Duration** 26128  
**Number of Samples** 87863  
**Number of invalid sample** 1210  
**Number of no position solution samples** 10569  
**Number of missing sample** -9479  
**Logging Loss** -12.093  
**Processing Loss** 1.3771  
**Number of Misleading Information** 0  
**Data gaps** 59  
**Discontinuities** 240

Number of Samples :

Valid	APV-1	LPV-200	CAT-1	APV-35m
76084	67084	64761	0	64761

Accuracy statistics :

	Valid	APV-1	LPV-200	CAT-1	APV-35m
HPE 95%	1.7394	1.60758	1.57647	NaN	1.57647
HPEscale 95%	NaN	4.8503	4.86789	NaN	4.86789
VPE 95%	1.78197	1.70308	1.71395	NaN	1.71395
VPEscale 95%	NaN	4.24723	2.99962	NaN	2.99962

Availability :

	Valid	APV-1	LPV-200	CAT-1	APV-35m
Signal in Space	0.878031	0.774168	0.74736	0	0.74736
measurements	0.865939	0.763507	0.737068	0	0.737068
Operational	2.91197	2.56751	2.47861	0	2.47861

Discontinuity events :

	Valid	APV-1	LPV-200	CAT-1	APV-35m
All	192	345	399	--	399

<b>Long</b>	63	120	137	--	137
<b>Independent</b>	54	97	96	--	96
<b>P(disc.)</b>	0.0106461	0.0216892	0.0222356	NaN	0.0222356
<b>P(slide)</b>	0.0350435	0.0687906	0.076184	NaN	0.076184

**Integrity events :**

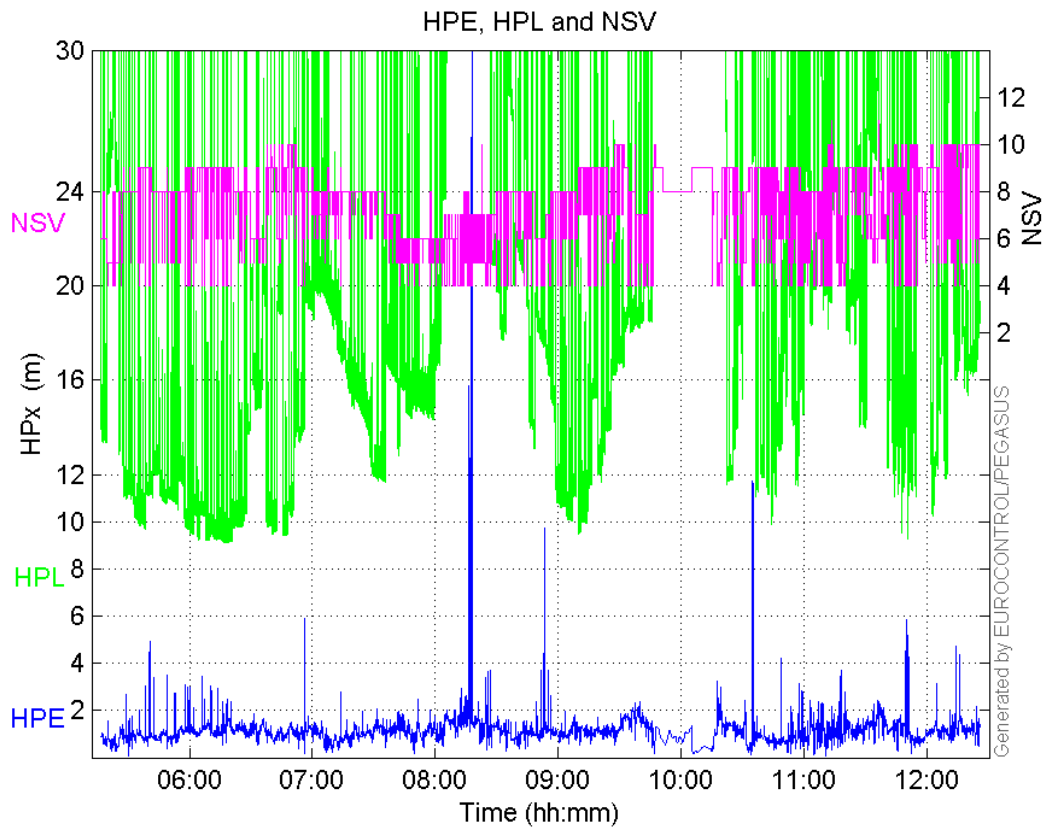
	MI	HMI APV-1	HMI LPV-200	HMI CAT-1	HMI APV-35m
<b>Total</b>	0	0	0	0	0
<b>Horizontal</b>	0	0	0	0	0
<b>Vertical</b>	0	0	0	0	0

**Performance Summary :**

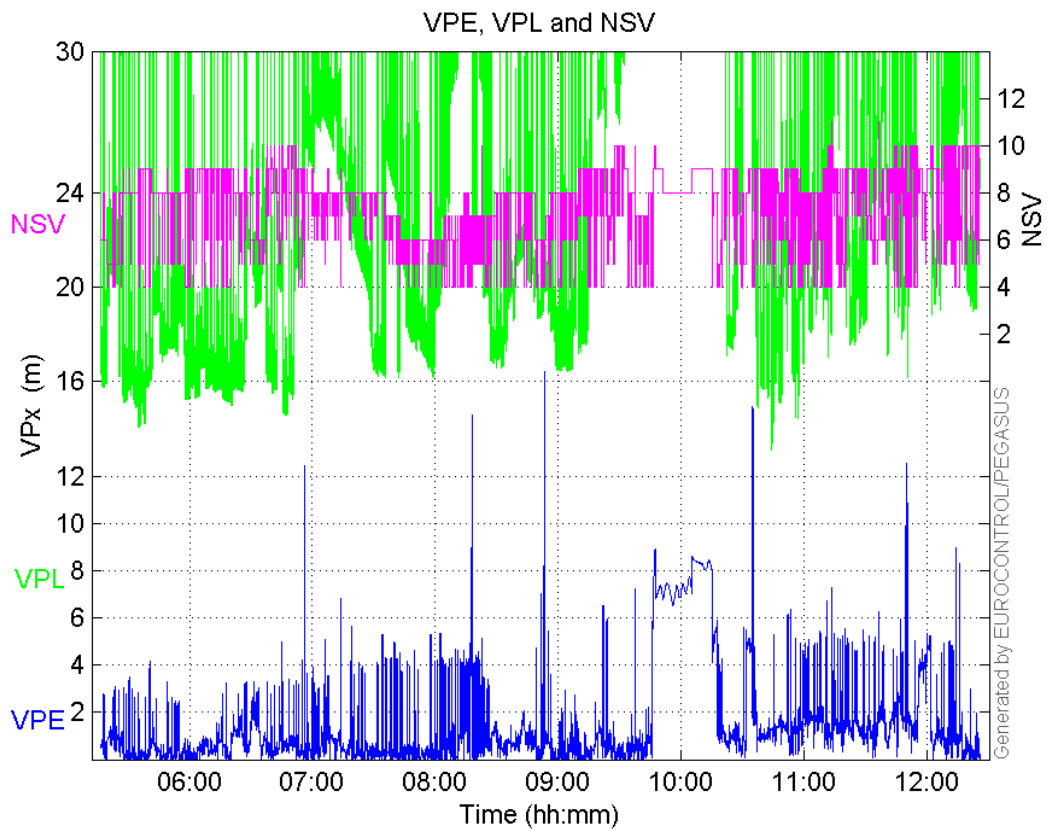
	Valid	APV-1	LPV-200	CAT-1	APV-35m
<b>Samples</b>	76084	67084	64761	0	64761
<b>SIS Availability</b>	0.878031	0.774168	0.74736	0	0.74736
<b>Local Availability</b>	0.865939	0.763507	0.737068	0	0.737068
<b>Operational Availability</b>	2.91197	2.56751	2.47861	0	2.47861
<b>HPE 95%</b>	1.7394	1.60758	1.57647	NaN	1.57647
<b>HPEScale 95%</b>	NaN	4.8503	4.86789	NaN	4.86789
<b>VPE 95%</b>	1.78197	1.70308	1.71395	NaN	1.71395
<b>VPEscale 95%</b>	NaN	4.24723	2.99962	NaN	2.99962
<b>All Discontinuity Events</b>	192	345	399	--	399
<b>Long Discontinuity Events</b>	63	120	137	--	137
<b>Independent Discontinuity Events</b>	54	97	96	--	96
<b>P(discontinuity)</b>	0.0106461	0.0216892	0.0222356	NaN	0.0222356
<b>P(sliding window)</b>	0.0350435	0.0687906	0.076184	NaN	0.076184
<b>All Integrity Events</b>	0	0	0	0	0
<b>Horizontal Integrity Events</b>	0	0	0	0	0
<b>Vertical Integrity Events</b>	0	0	0	0	0

**Time Series**

**HPE, HPL and NSV:**

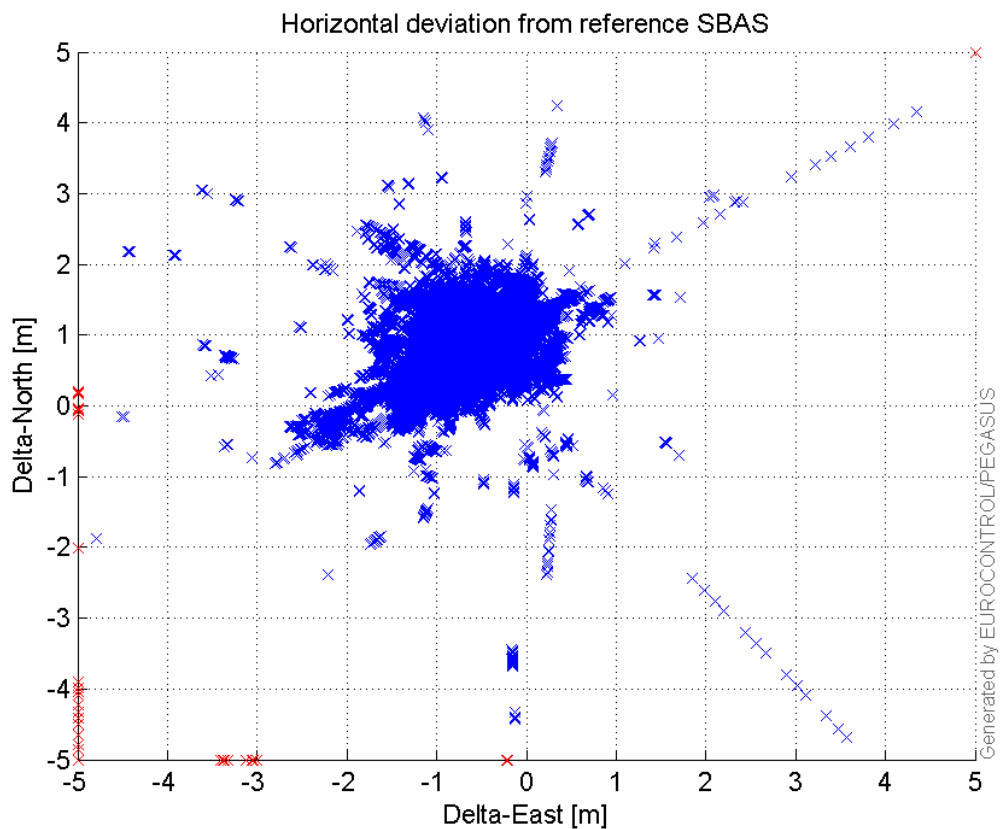


**VPE, VPL and NSV:**



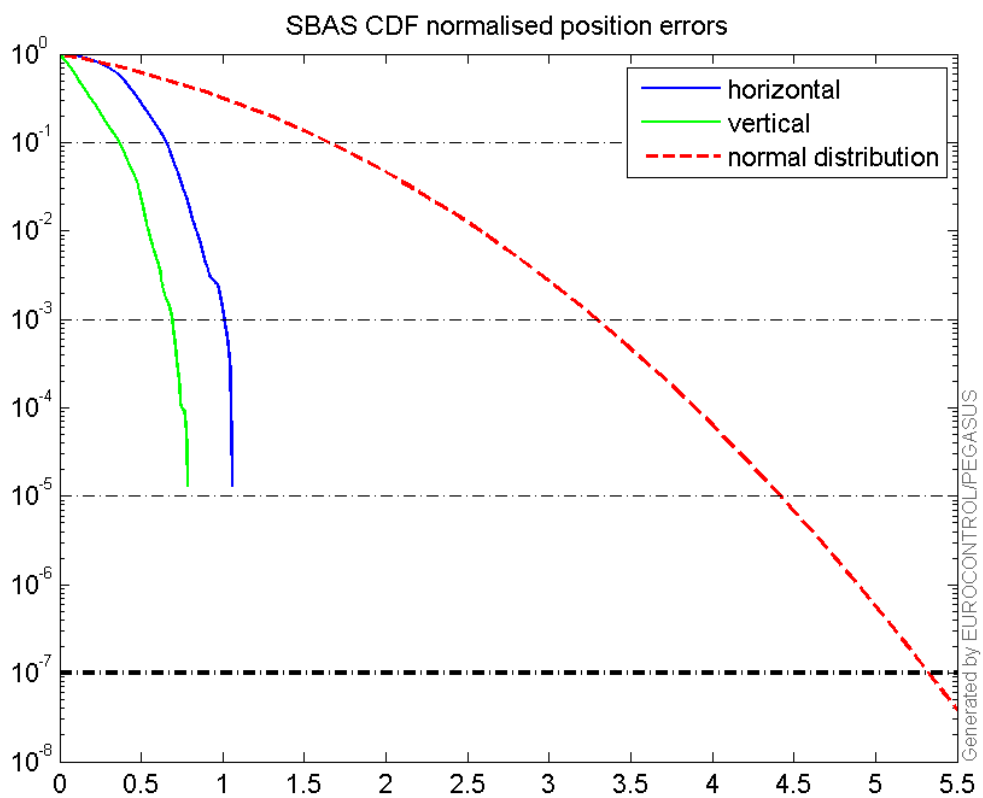
**Horizontal deviation**

**Horizontal deviation from reference SBAS:**



### CDF position

SBAS CDF position domain:





## Statistics

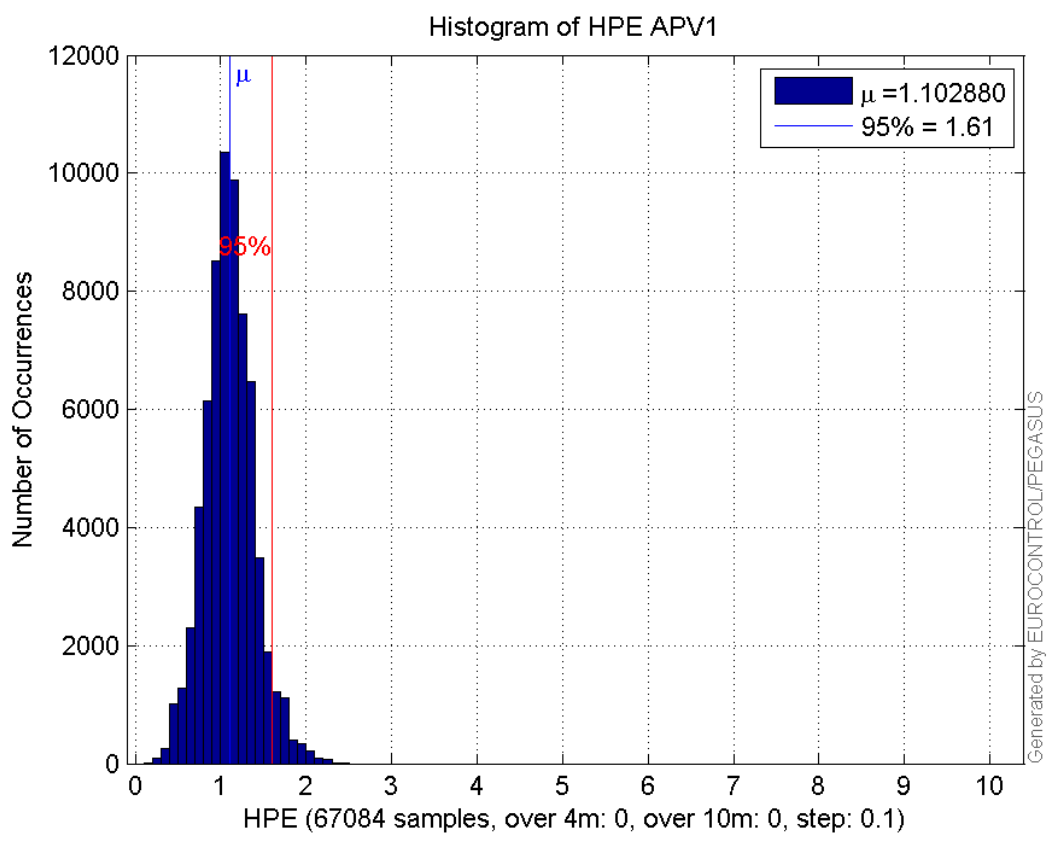
<b>number</b>	67084
<b>sum</b>	73985.62
<b>sum2</b>	87279.614
<b>prctile95</b>	1.6075829
<b>prctile99</b>	1.9113531
<b>number</b>	67084
<b>sum</b>	44259.299
<b>sum2</b>	48186.65
<b>prctile95</b>	1.7030768
<b>prctile99</b>	2.1870076
<b>number</b>	67084
<b>sum</b>	1130458
<b>sum2</b>	21673931
<b>prctile95</b>	29.30121
<b>prctile99</b>	37.770394
<b>number</b>	67084
<b>sum</b>	1466124.3
<b>sum2</b>	34213064
<b>prctile95</b>	33.55599
<b>prctile99</b>	41.46157
<b>number</b>	67084
<b>sum</b>	4863.6765
<b>sum2</b>	402.91801
<b>prctile95</b>	0.12125748
<b>prctile99</b>	0.14147754
<b>number</b>	67084
<b>sum</b>	2085.2554
<b>sum2</b>	109.53334
<b>prctile95</b>	0.084944521
<b>prctile99</b>	0.10351209
<b>number</b>	64761
<b>sum</b>	70923.995
<b>sum2</b>	83016.68
<b>prctile95</b>	1.5764725
<b>prctile99</b>	1.9113563
<b>number</b>	64761
<b>sum</b>	42382.034
<b>sum2</b>	46271.132
<b>prctile95</b>	1.7139482
<b>prctile99</b>	2.195104
<b>number</b>	64761
<b>sum</b>	1073252.5
<b>sum2</b>	20109235
<b>prctile95</b>	27.669115
<b>prctile99</b>	37.626545
<b>number</b>	64761
<b>sum</b>	1376192.4
<b>sum2</b>	30704976
<b>prctile95</b>	31.566925
<b>prctile99</b>	34.005289
<b>number</b>	64761
<b>sum</b>	4726.4582
<b>sum2</b>	393.86734

**prctile95** 0.12169731  
**prctile99** 0.14188231  
**number** 64761  
**sum** 2036.9125  
**sum2** 108.27331  
**prctile95** 0.085703529  
**prctile99** 0.10383828

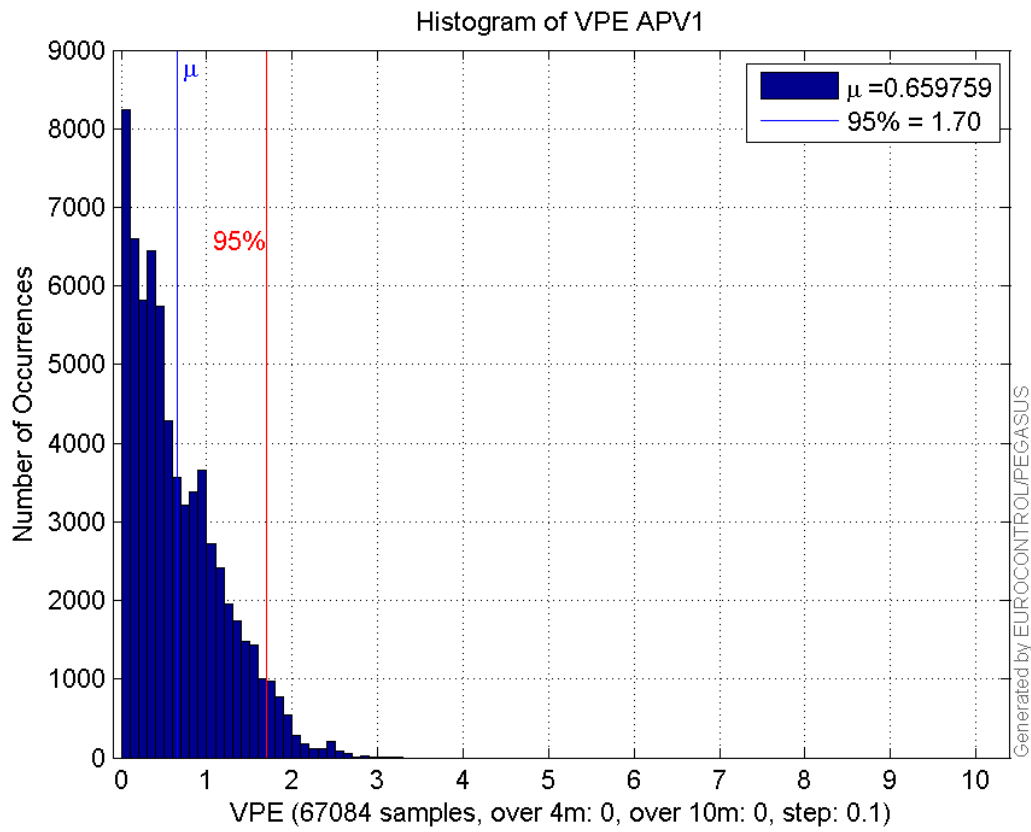
**Error and XPL Statistics :**

	Mean Value	Standard Deviation	50% Value	95% Value	99% Value	RMS Value
HPE	1.10288	0.291043	1.09215	1.60758	1.91135	1.14064
HPL	16.8514	6.25444	15.7922	29.3012	37.7704	17.9746
VPE	0.659759	0.532001	0.51357	1.70308	2.18701	0.847528
VPL	21.8551	5.68863	20.3611	33.556	41.4616	22.5833

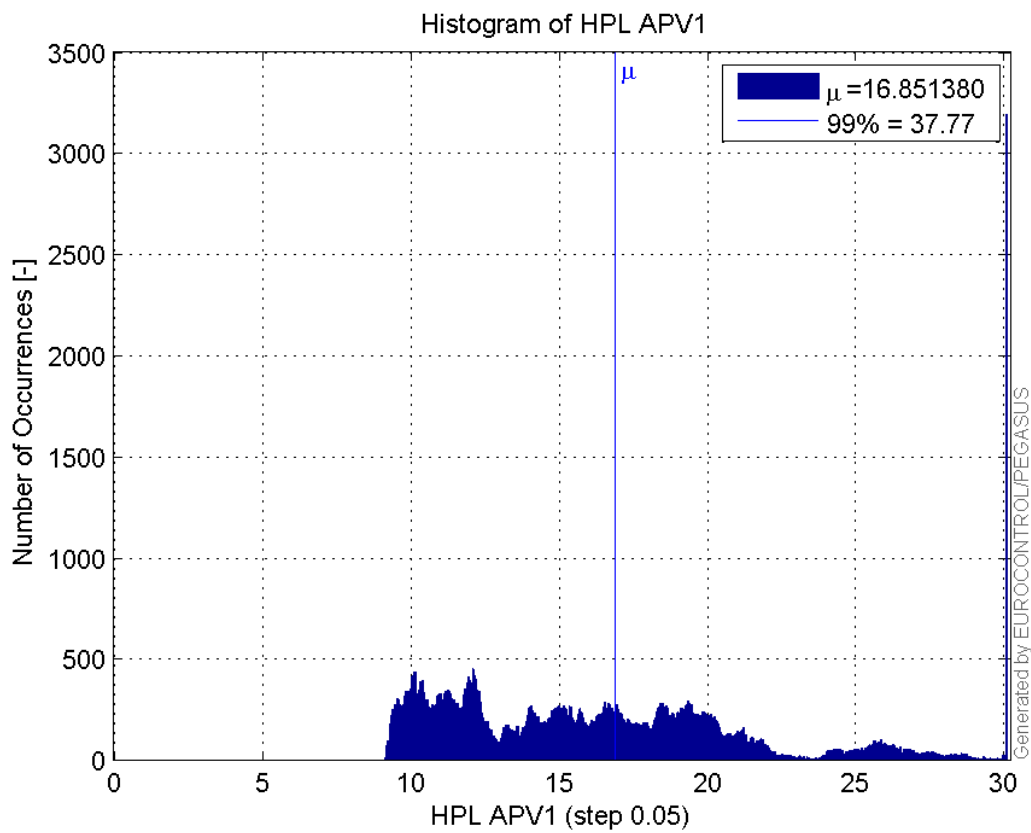
**Histogram of HPE APV1:**



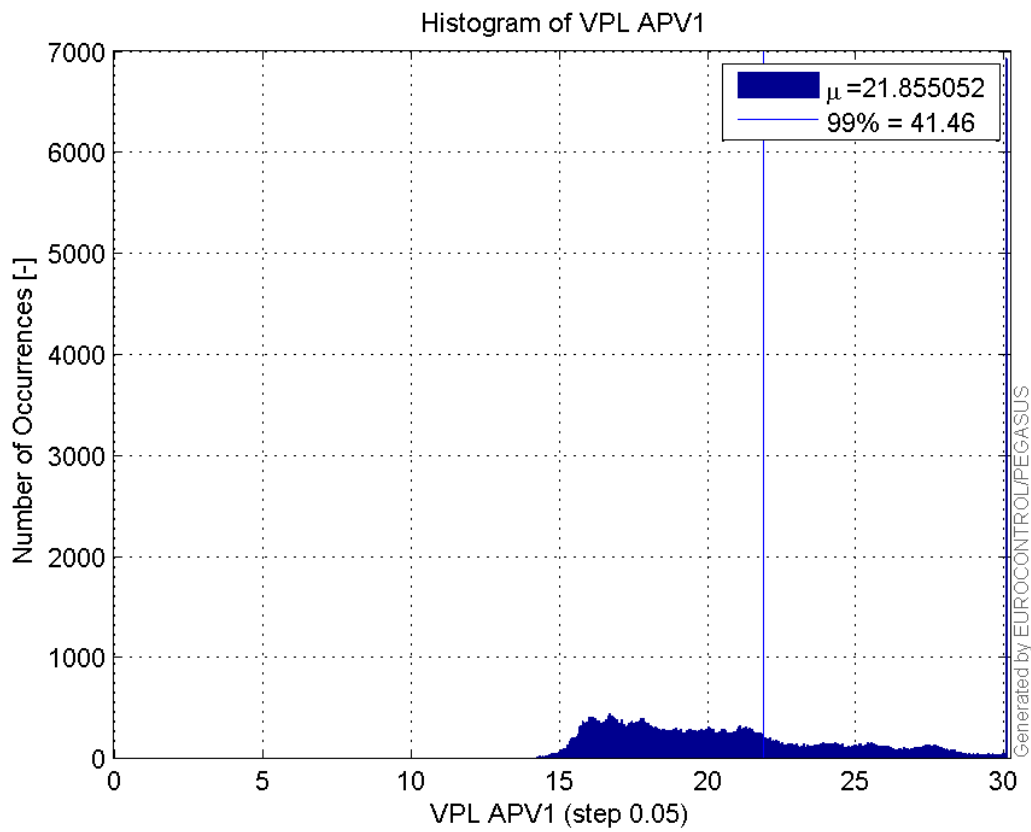
**Histogram of VPE APV1:**



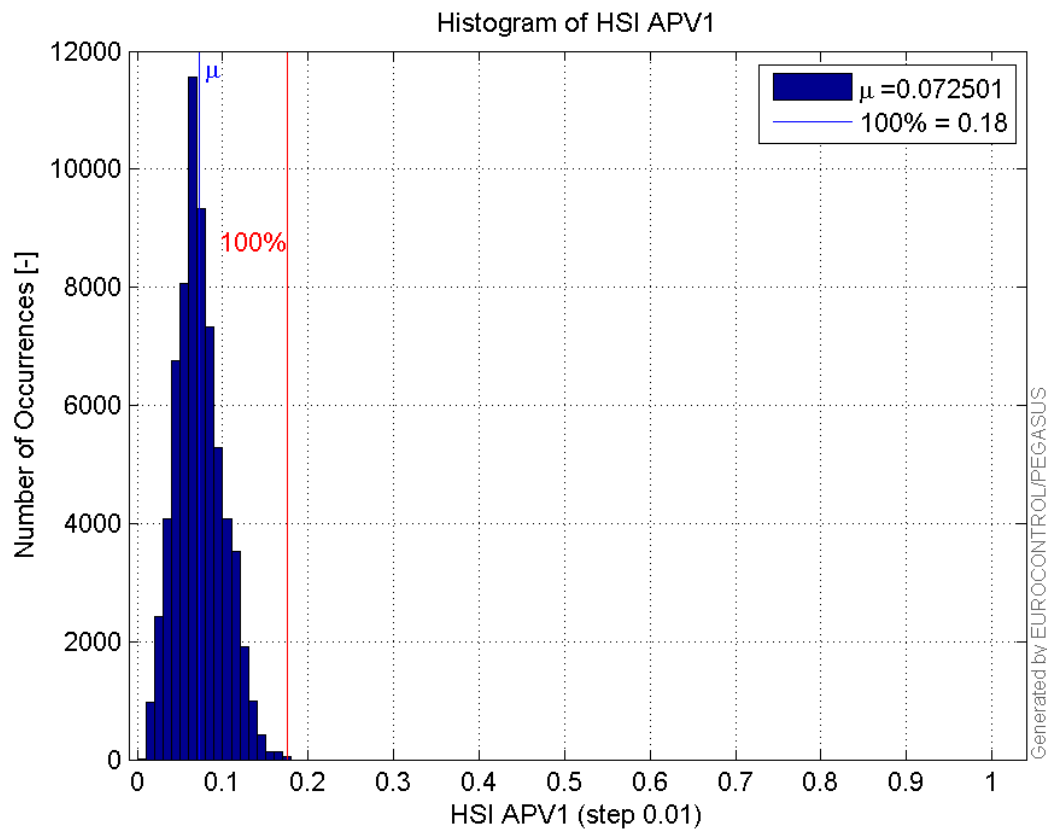
**Histogram of HPL APV1:**



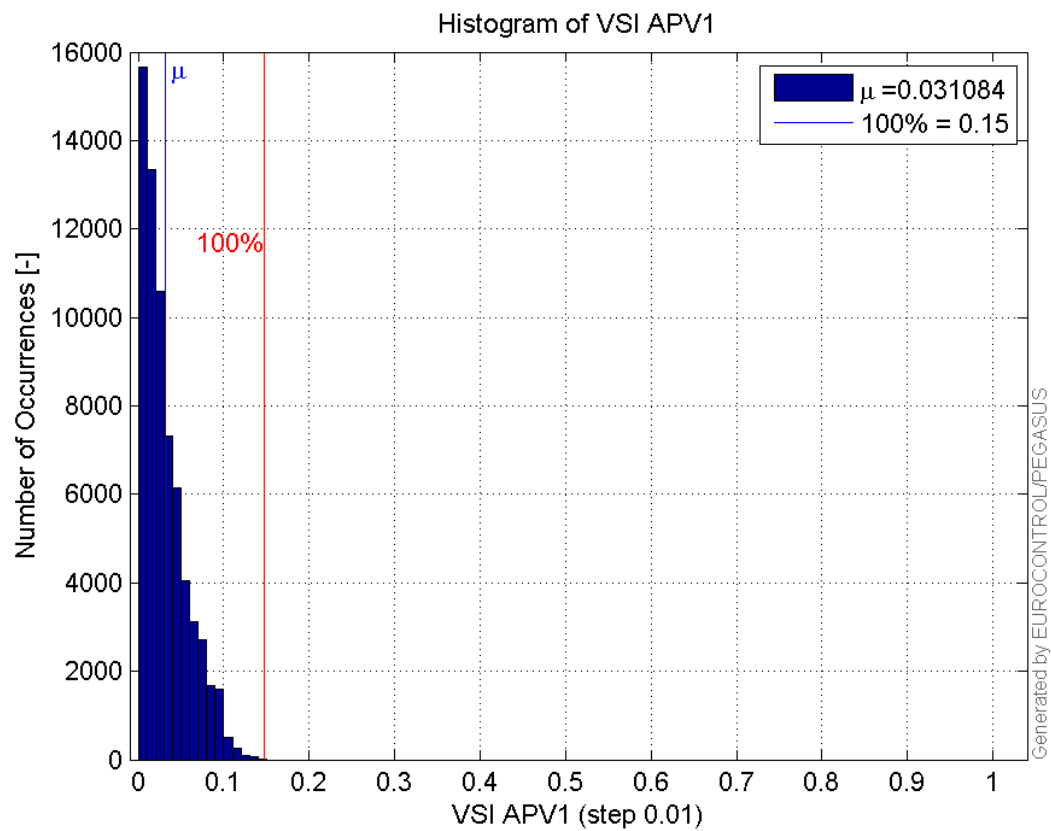
**Histogram of VPL APV1:**



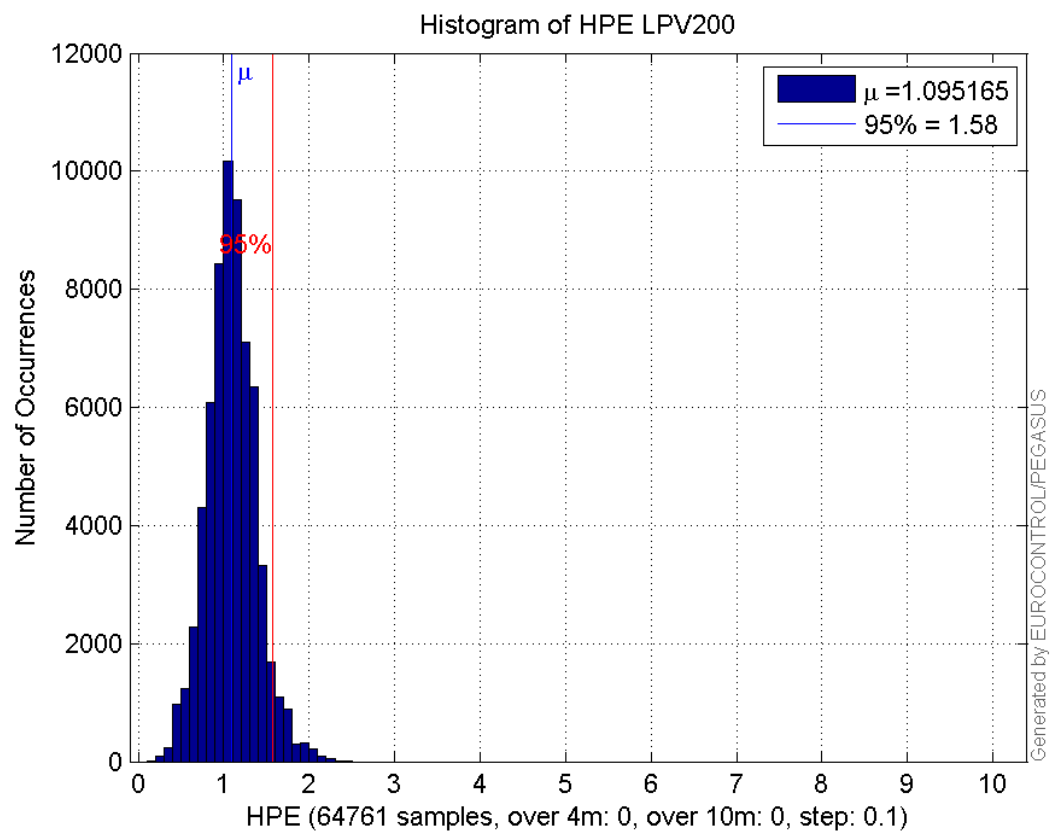
**Histogram of HSI APV1:**



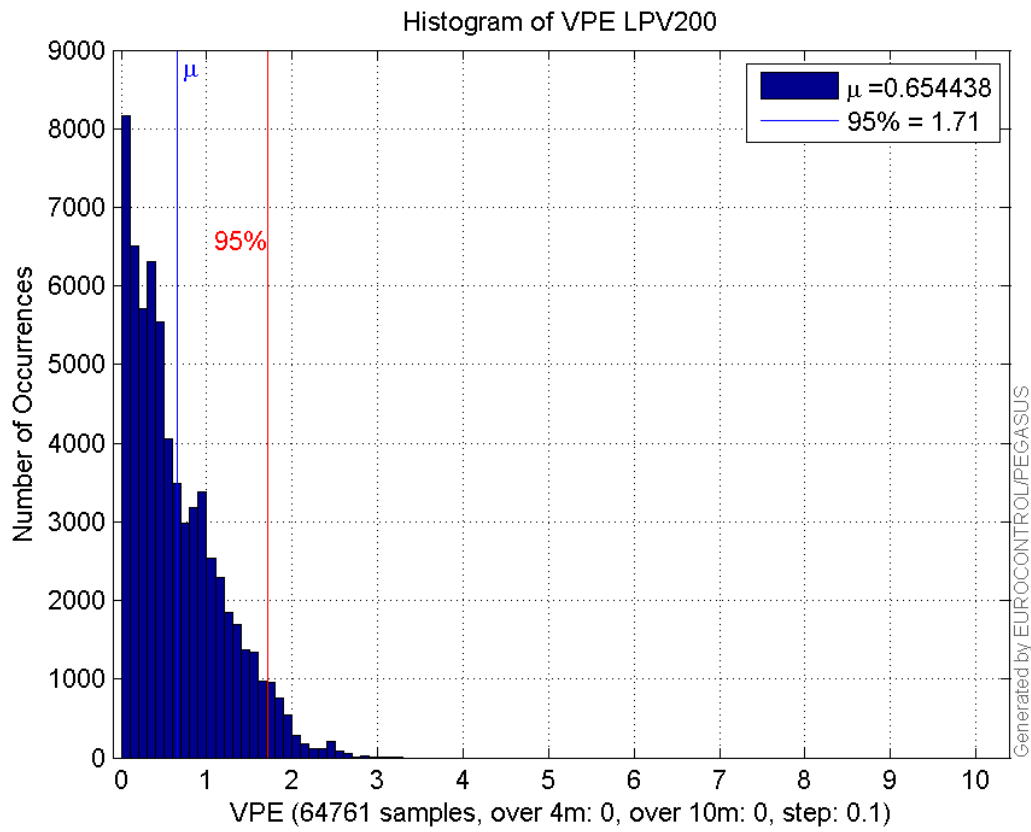
**Histogram of VSI APV1:**



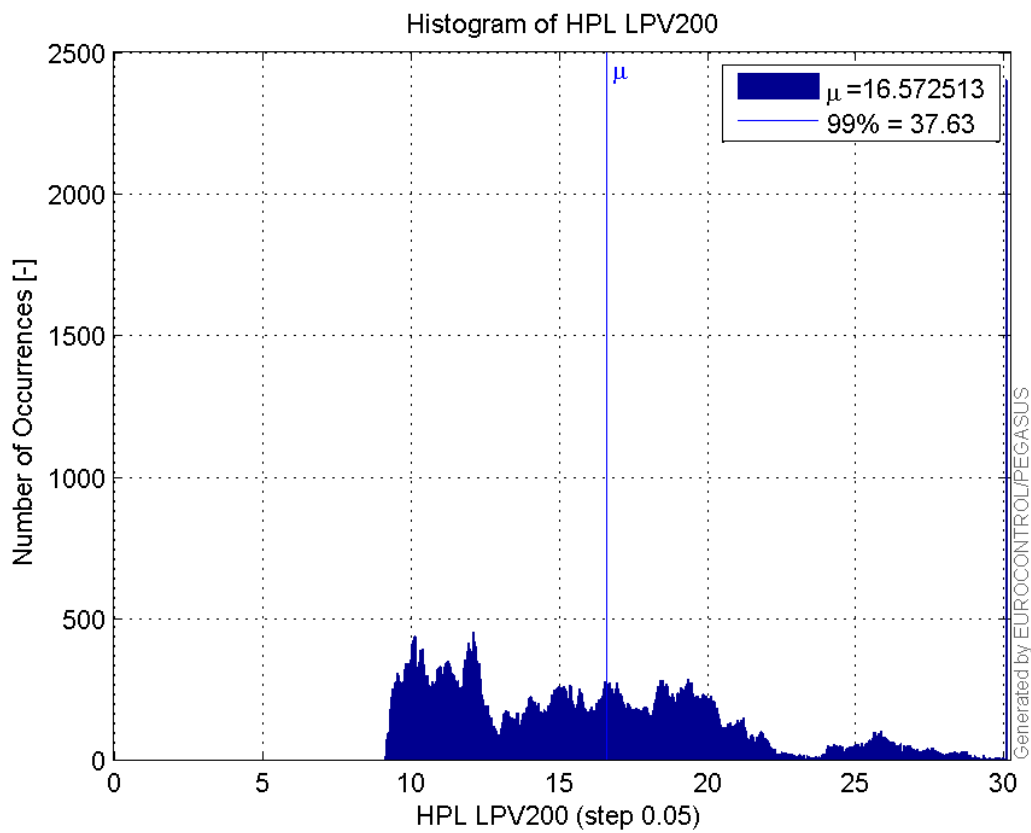
**Histogram of HPE LPV200:**



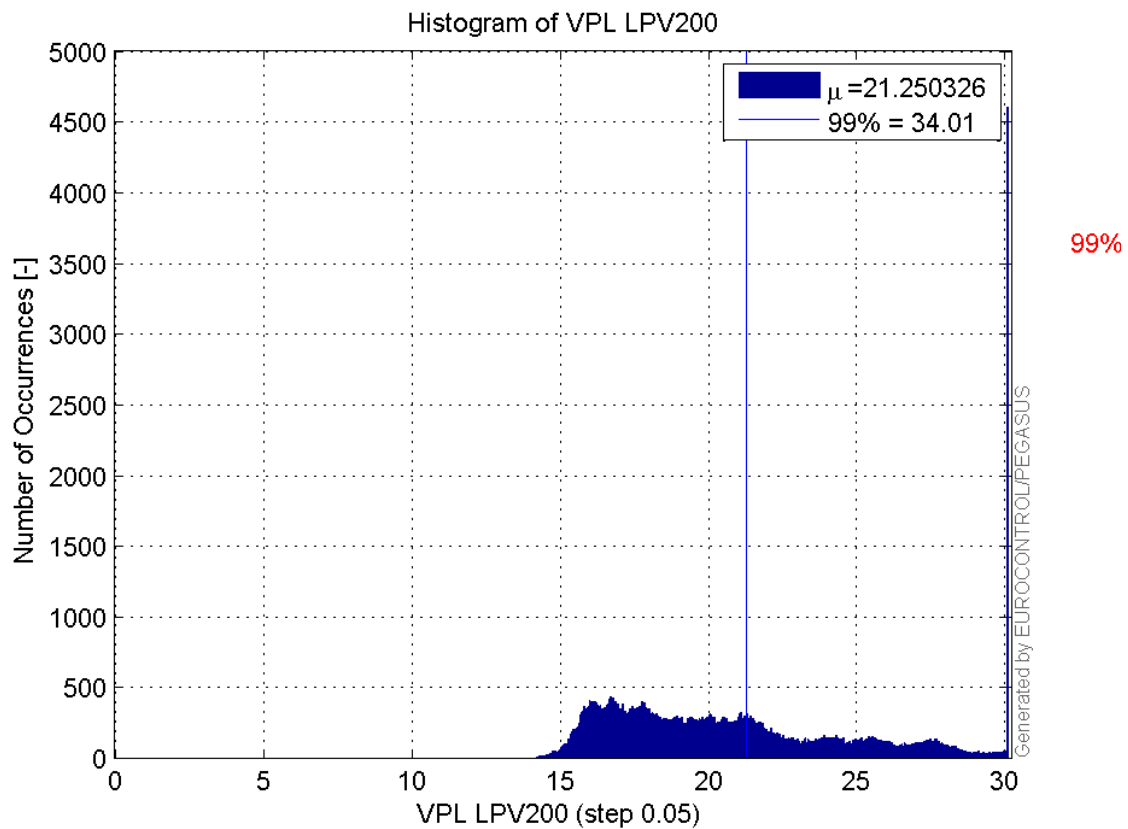
**Histogram of VPE LPV200:**



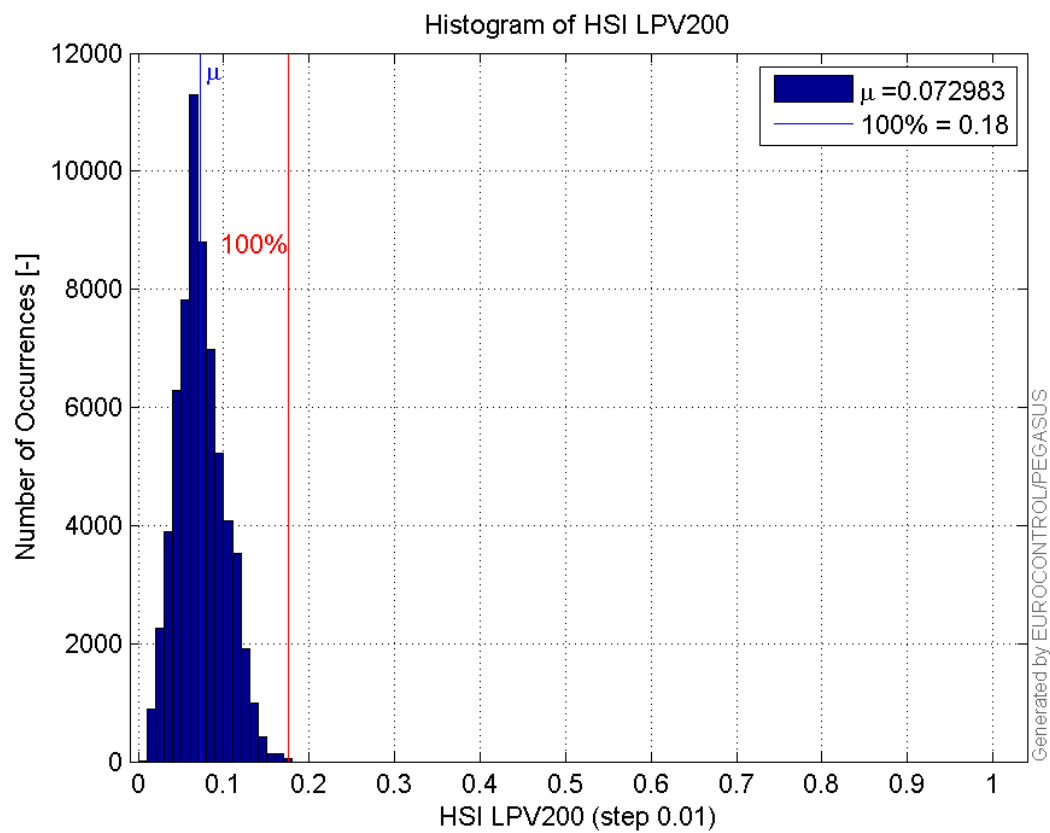
**Histogram of HPL LPV200:**



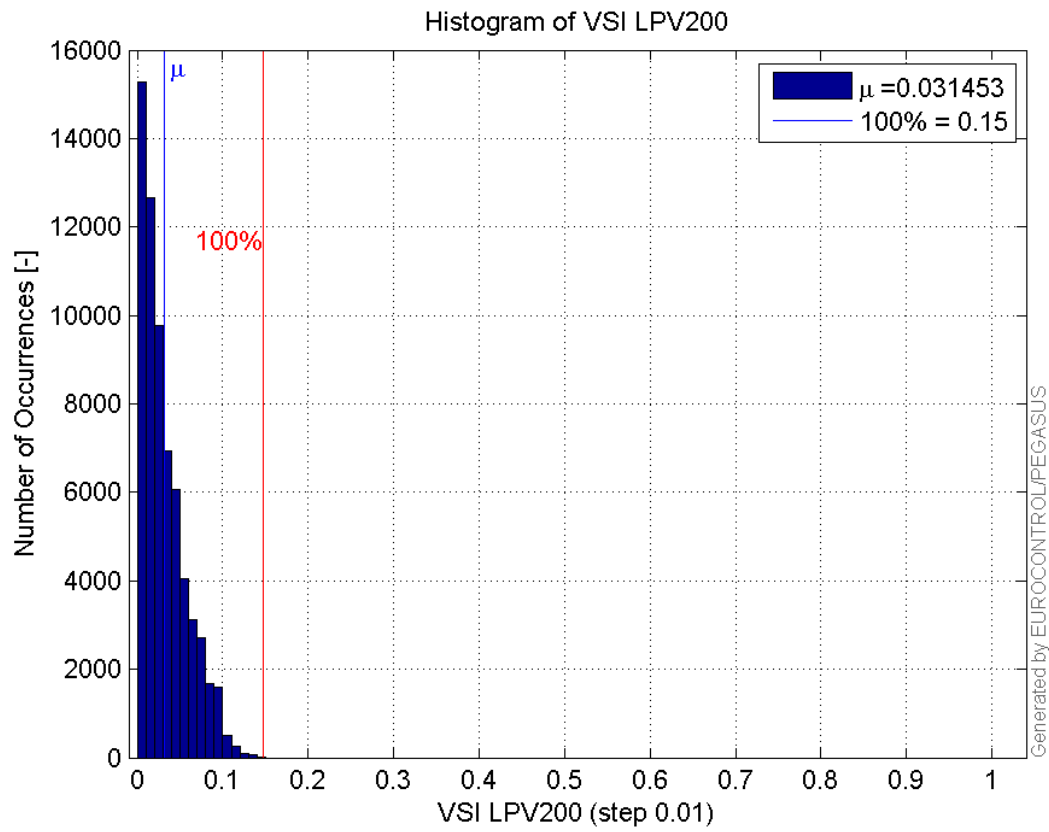
**Histogram of VPL LPV200:**



**Histogram of HSI LPV200:**

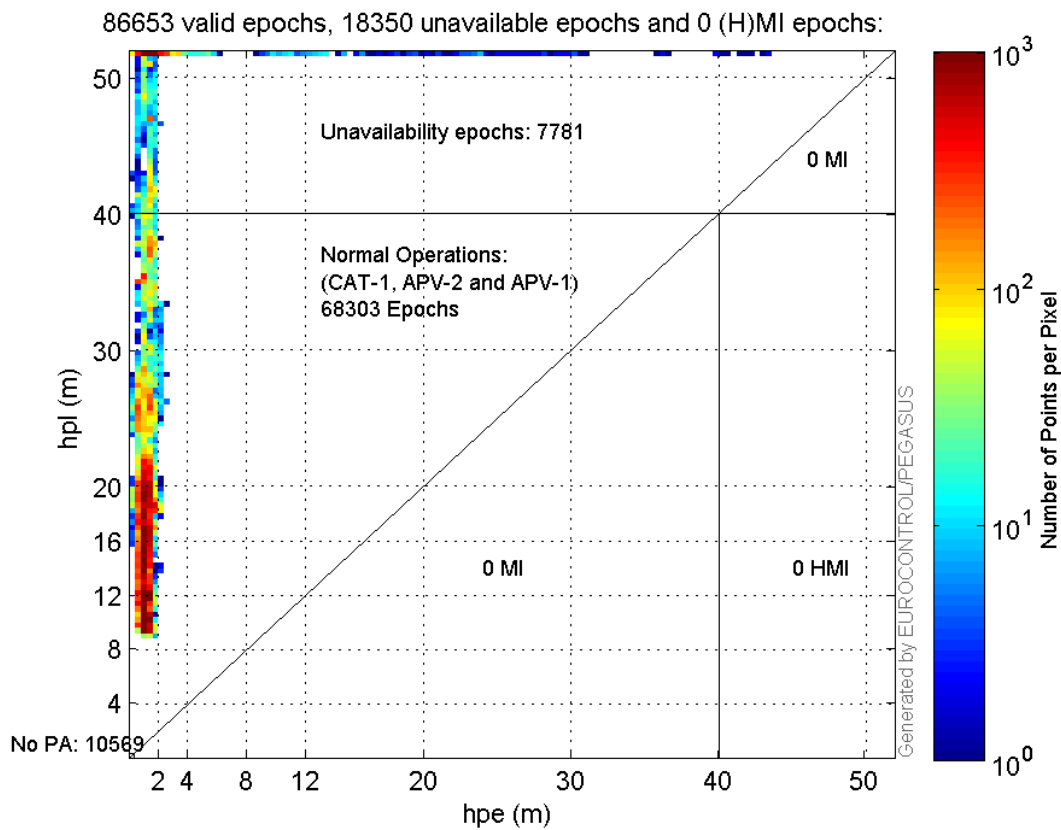


**Histogram of VSI LPV200:**



### Stanford Plots

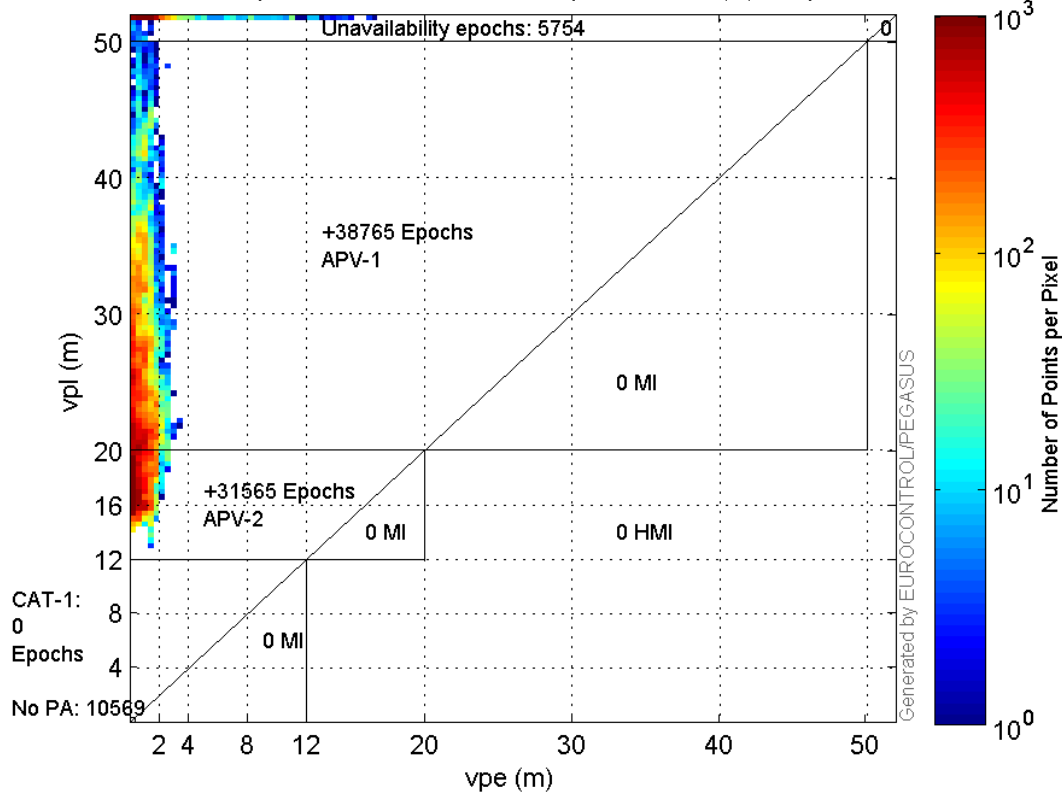
#### Horizontal\_Stanford\_Plot\_SBAS:



#### Vertical\_Stanford\_Plot\_SBAS:



86653 valid epochs, 16323 unavailable epochs and 0 (H)MI epochs:



## Parameters

## system

Name	Section	Value
name	system	GNSS_Solution
version	system	4.8.4.0
input_prefix	system	D:/PegasusDateJob/job/2016_04_14EGNOS615/02_Convertor/02_Convertor
output_prefix	system	D:/PegasusDateJob/job/2016_04_14EGNOS615/03_GNSS_Solution/03_GNSS_Solution_sol

## settings

Name	Section	Value
ref_lat	settings	50.439
ref_lon	settings	30.4297
ref_alt	settings	215.271
smoothing	settings	yes
smoothing_constant	settings	100
smoothing_max_gap	settings	10
smoothing_max_divergence	settings	3
min_elevation	settings	5
aad_model	settings	a
output_range_file	settings	yes
sbas_prn	settings	120
gnss_mode	settings	sbas

## results

Name	Section	Value
init_lat	results	50.439

init_lon	results	30.4297
init_alt	results	227.0497
mi_numbers	results	0

## Range Domain

**start:** 05:10:33.5 14.04.2016 ( week: 1892 sec: 364233.5 )  
**end:** 12:26:00 14.04.2016 ( week: 1892 sec: 390360 )  
**duration:** 07:15:28 ..

### quality

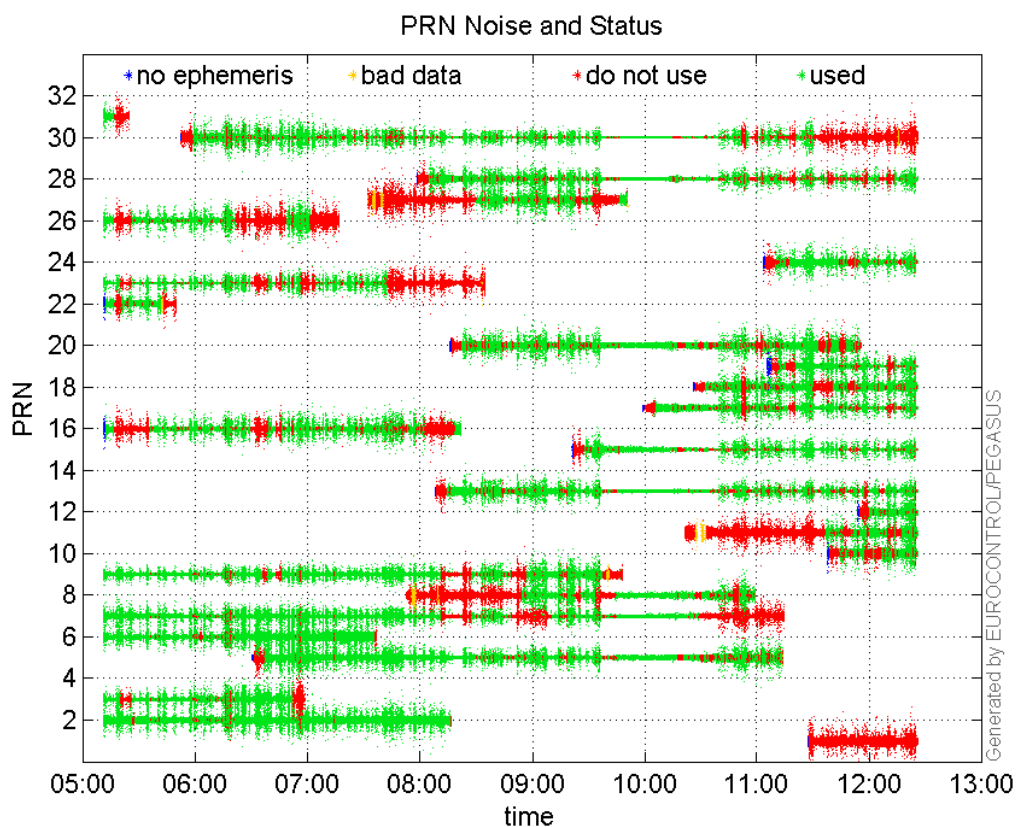
**valid samples** 87863  
**total samples** 87863

### PRN overview

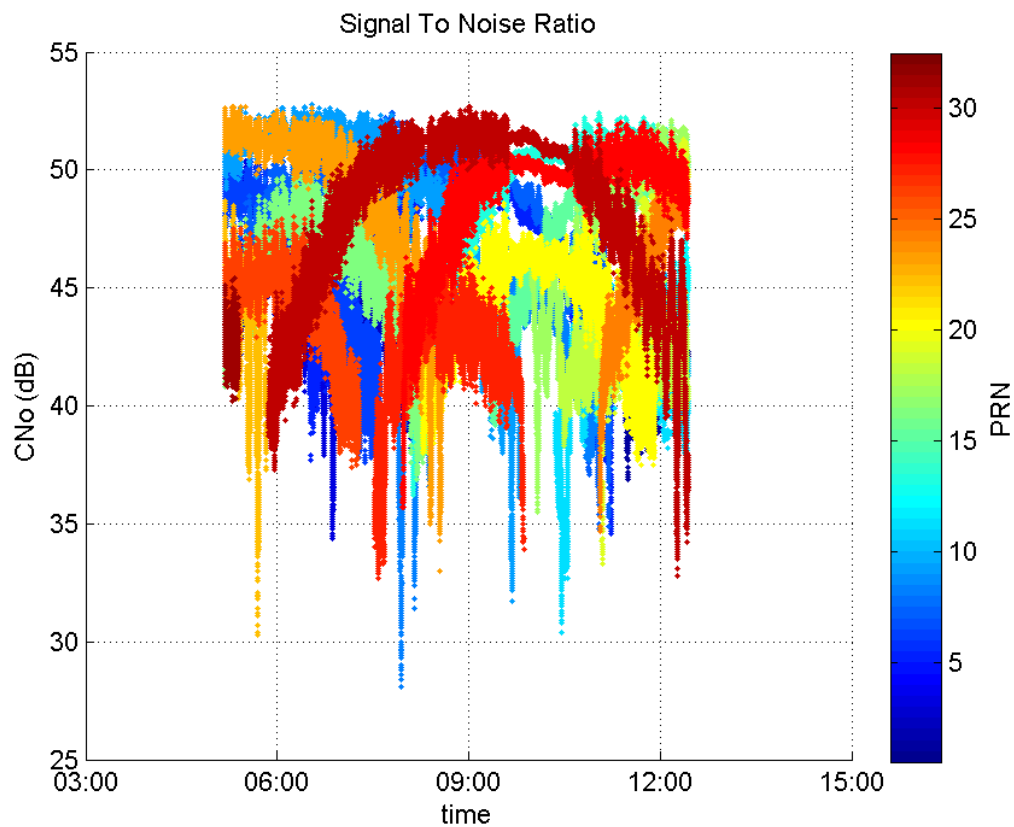
**Number of Visible GPS Satellites** 26  
**Number of Visible SBAS Satellites** 4

### signal quality and status

#### PRN Noise and Status:



#### Signal To Noise Ratio:



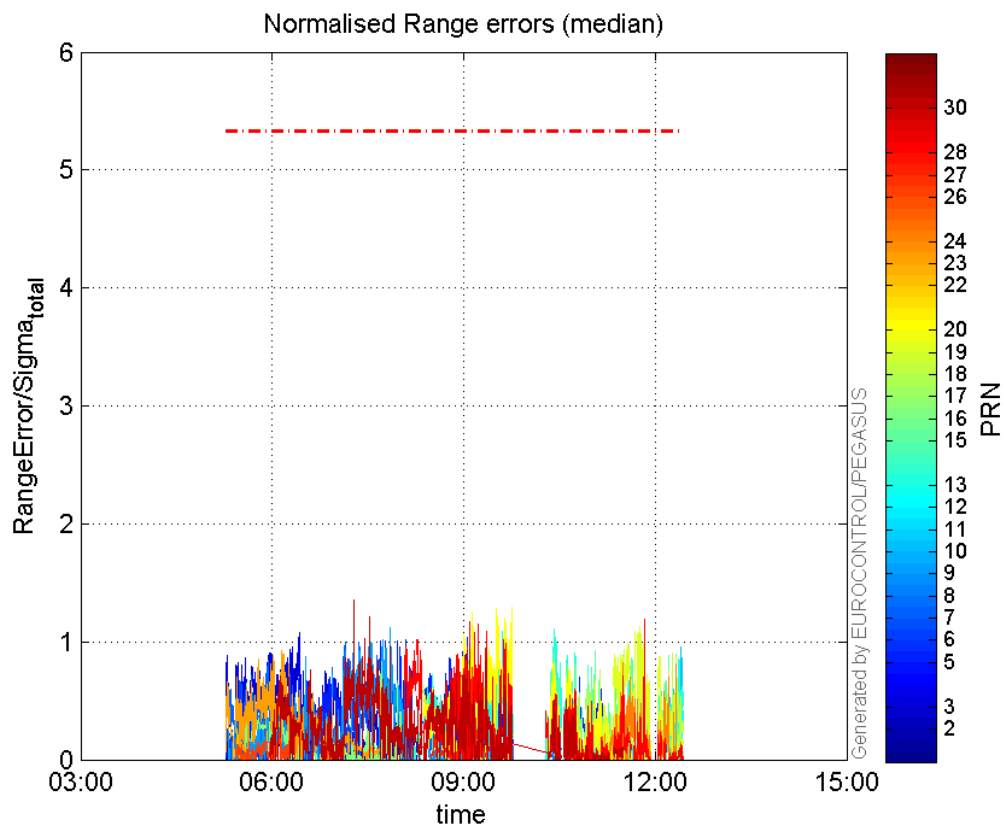
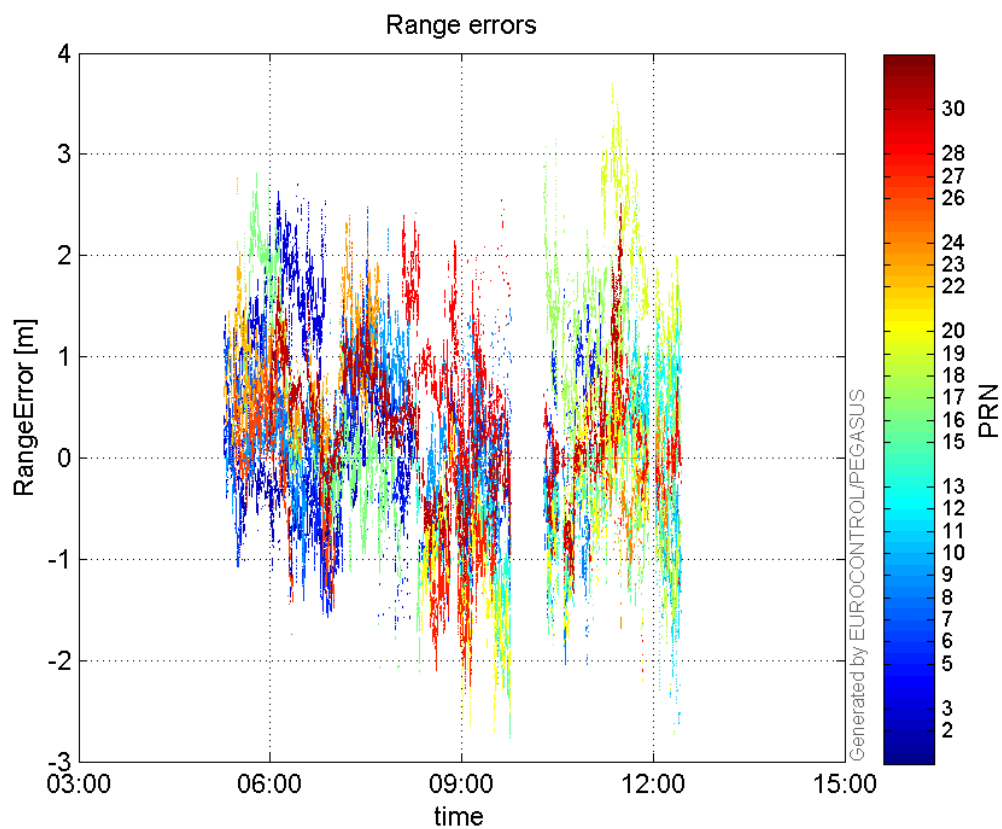
## range errors

Number of Overbounding Norm Errors 0

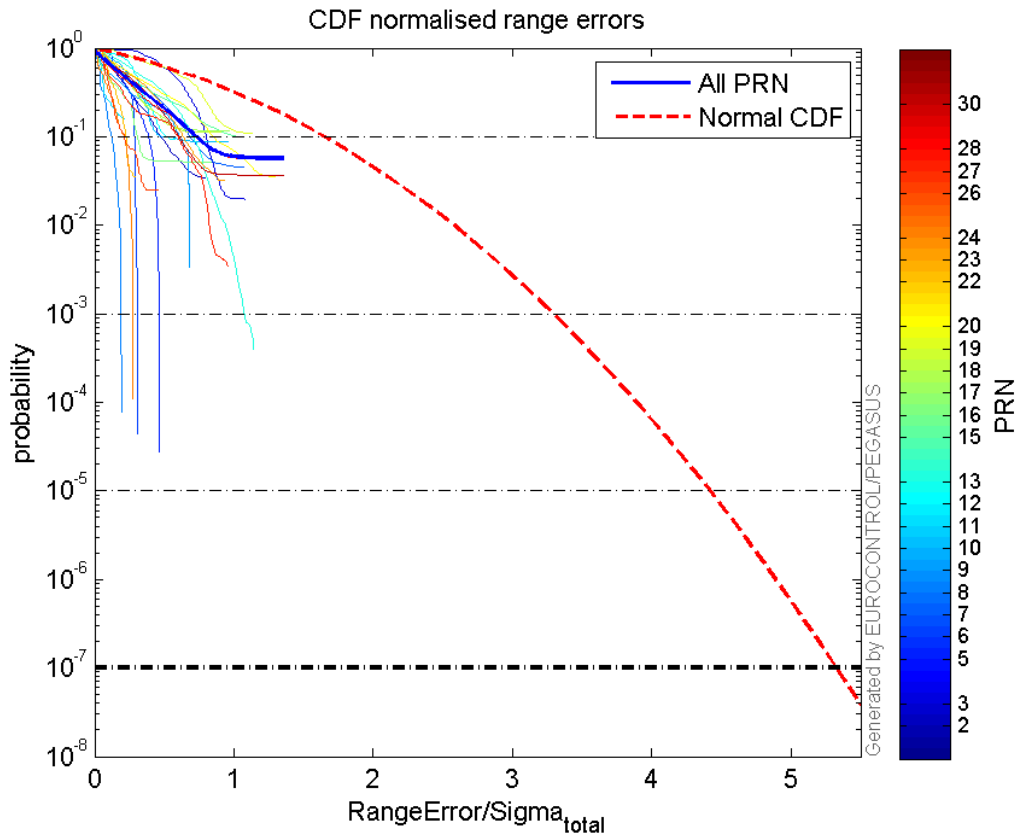
Max Norm Errors :

GPS Week	GPS Second	PRN	Norm Error	Range Error	Sigma
1892	368340	2	0.796097	-1.41864	1.78199
1892	368716	3	1.08139	2.7017	2.49837
1892	378234	5	1.0366	-1.59835	1.54191
1892	372695	6	0.907692	2.47631	2.72814
1892	373882	7	1.06631	1.78612	1.67504
1892	383835	8	0.635417	-1.99507	3.13979
1892	371820	9	1.17881	1.94406	1.64918
1892	390243	10	0.958666	-2.63008	2.74347
1892	388469	11	0.216366	1.01568	4.69427
1892	389136	12	0.578553	1.50271	2.59737
1892	380739	13	1.14246	-1.85703	1.62546
1892	380343	15	1.0738	-2.27167	2.11554
1892	373349	16	0.837587	-2.06545	2.46595
1892	388213	17	0.963088	-1.64254	1.70549
1892	389782	18	0.901149	-2.28573	2.53646
1892	387956	19	1.12982	2.6138	2.31348
1892	380737	20	1.2981	-2.36902	1.82499
1892	365342	22	0.285854	2.77147	9.6954
1892	367748	23	0.929953	1.38256	1.48669
1892	386952	24	0.819362	-1.63534	1.99588
1892	368407	26	0.458084	-1.7402	3.79888
1892	378234	27	0.958922	-2.32466	2.42424

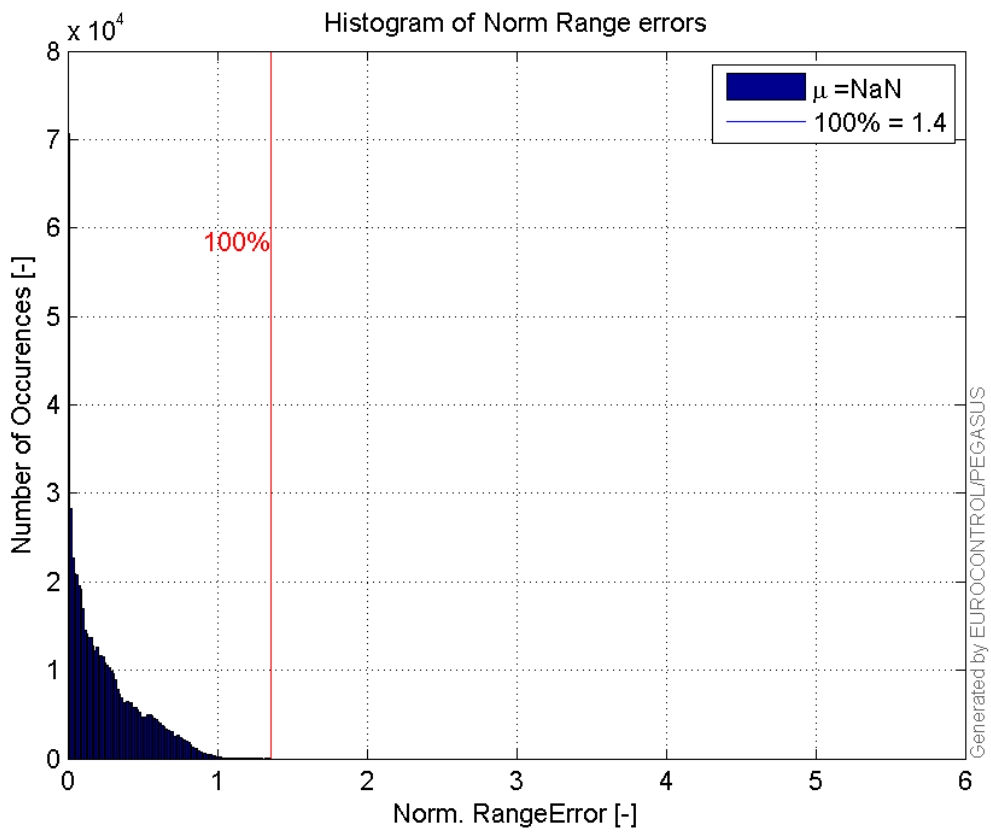
1892	388213	28	1.19113	-2.08743	1.75249
1892	371820	30	1.35788	2.11664	1.55878

**Normalised Range errors (median):****Range errors:**

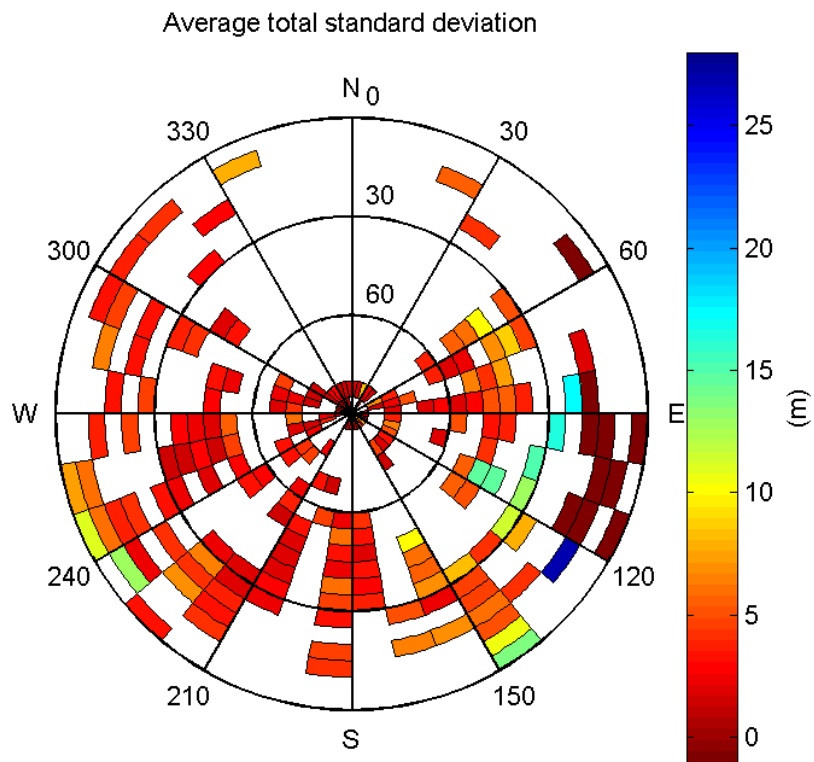
**CDF normalised range errors:**



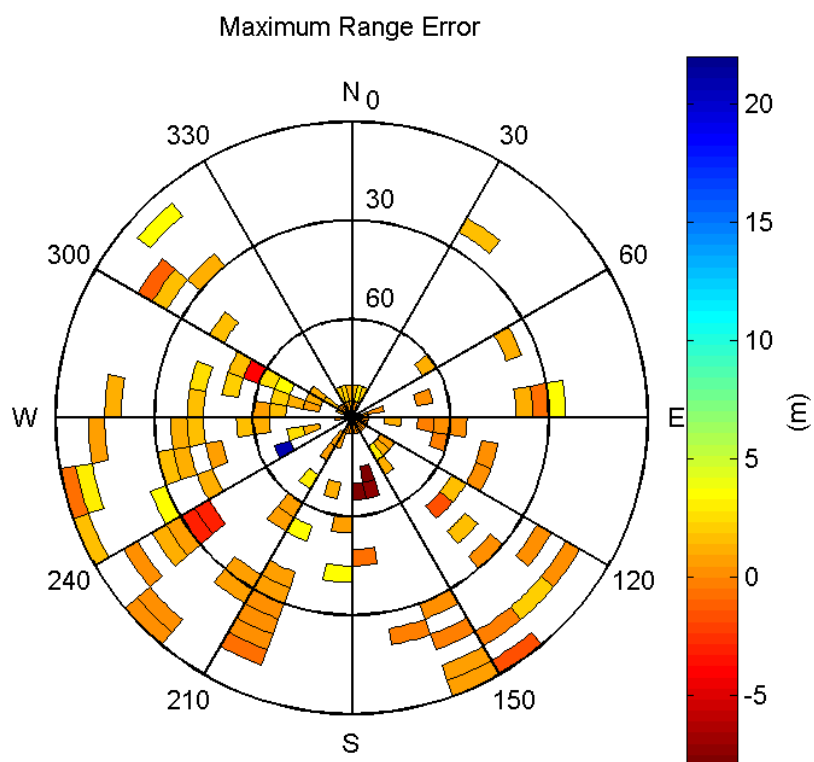
**Histogram of Norm Range errors:**



**Sigma Sky Plot:**

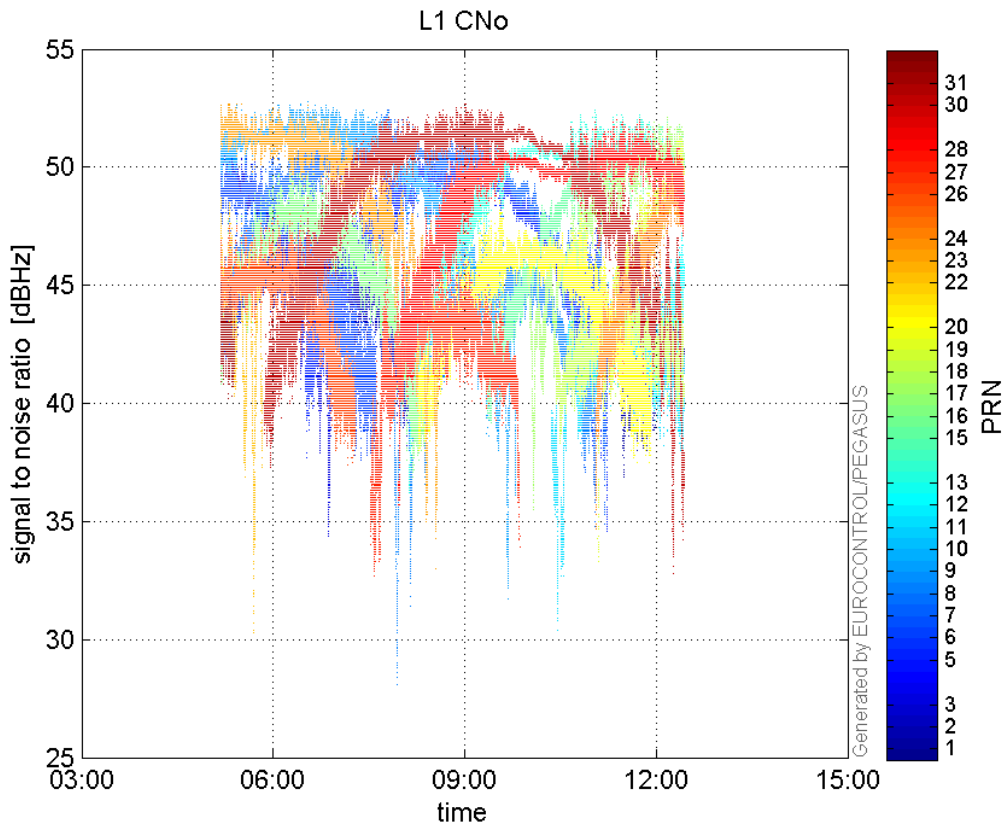


Norm Error Sky Plot:

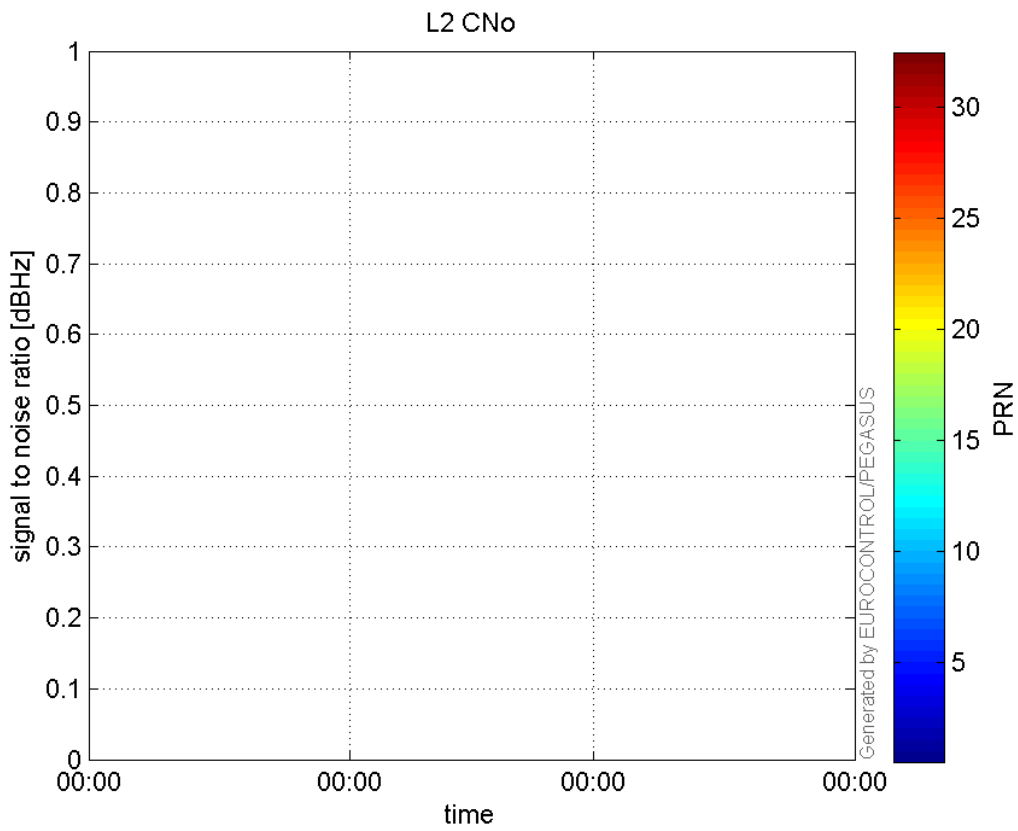


signal quality

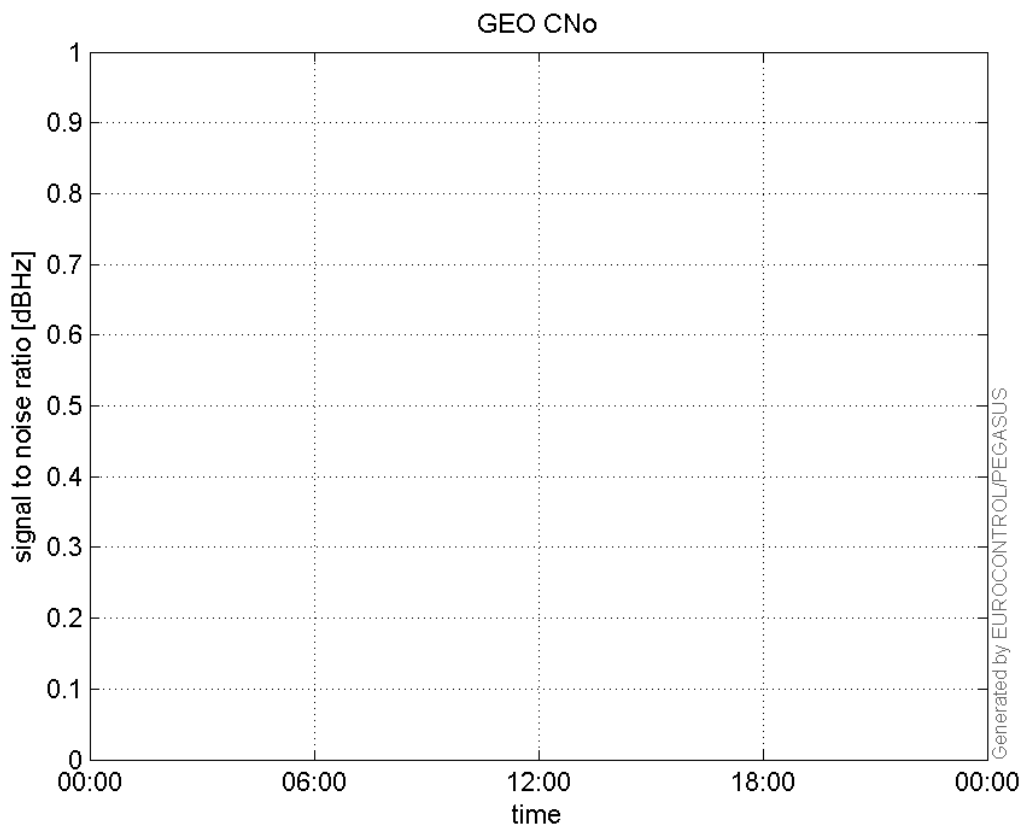
L1 CNo:



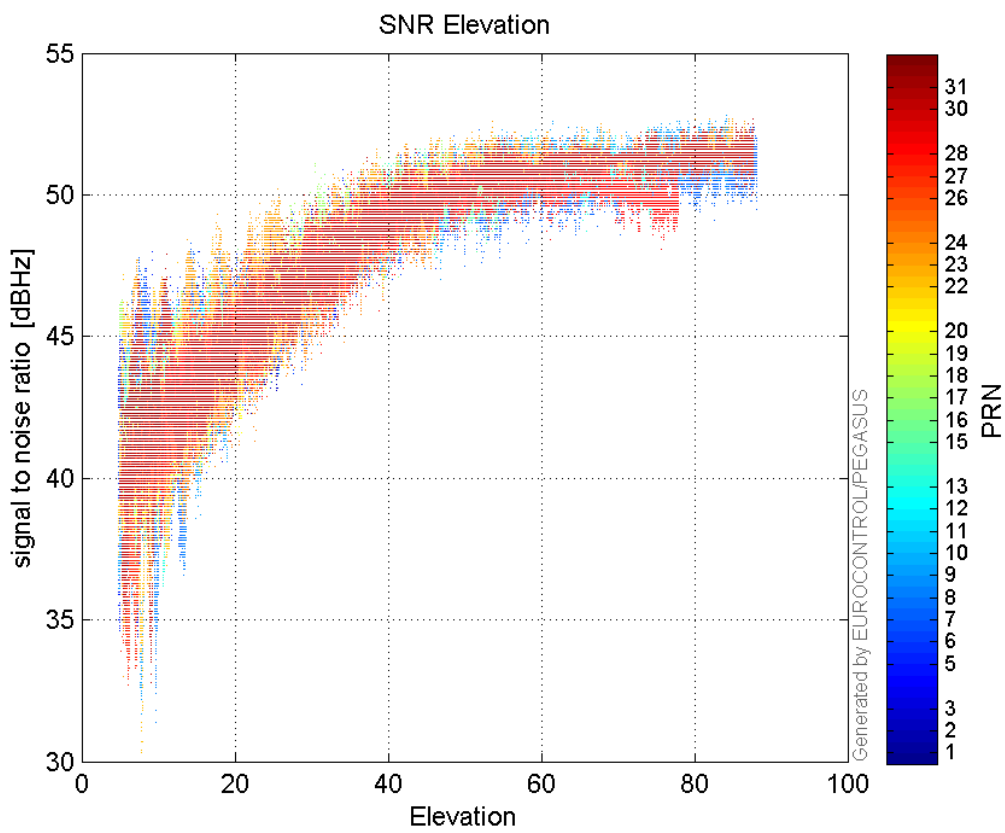
**L2 CNo:**



**GEO CNo:**

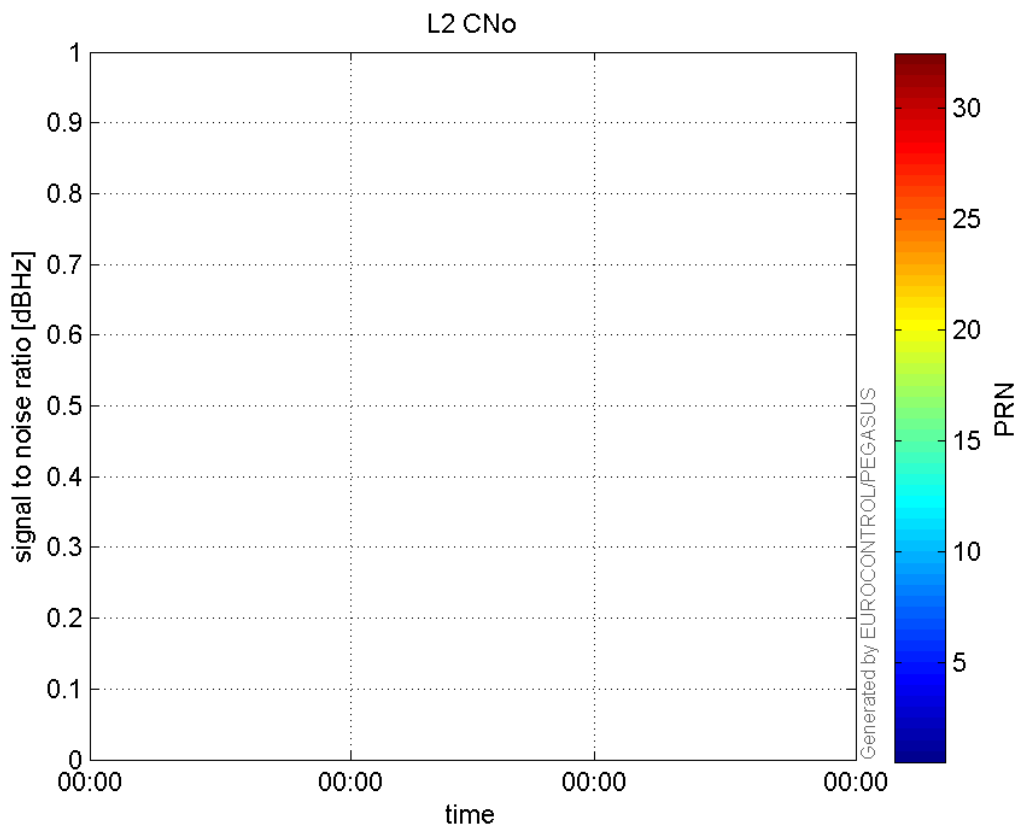


**SNR Elevation:**

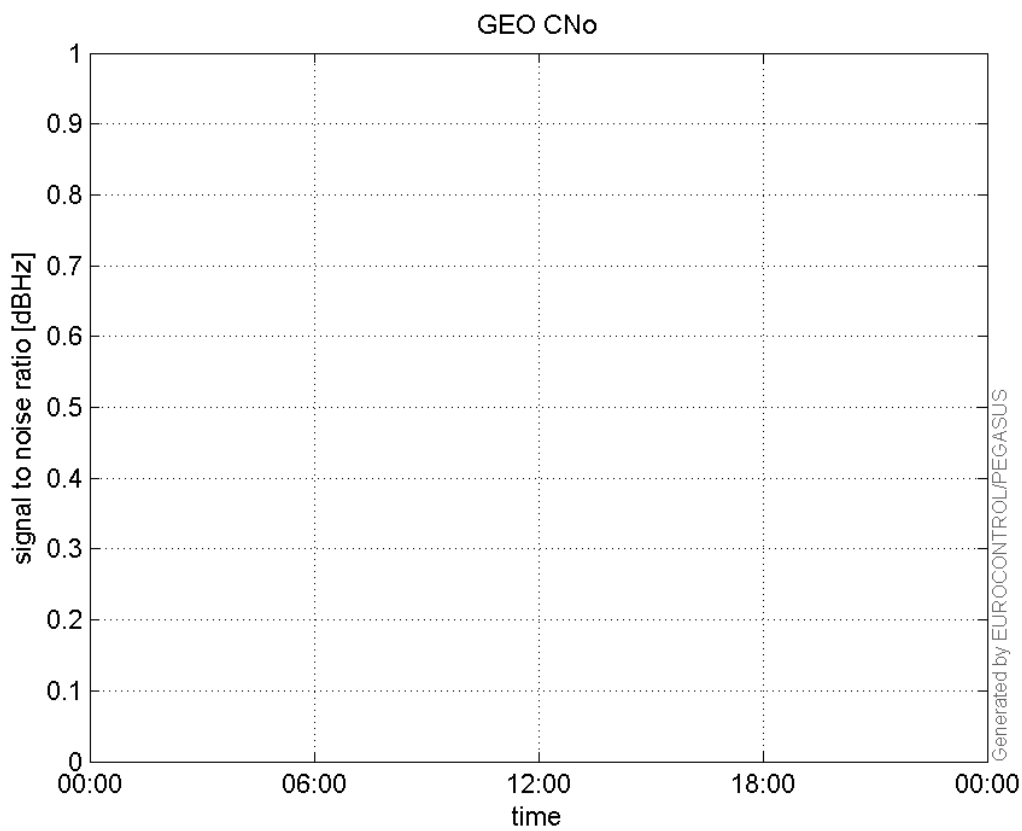


**L2 CNo:**



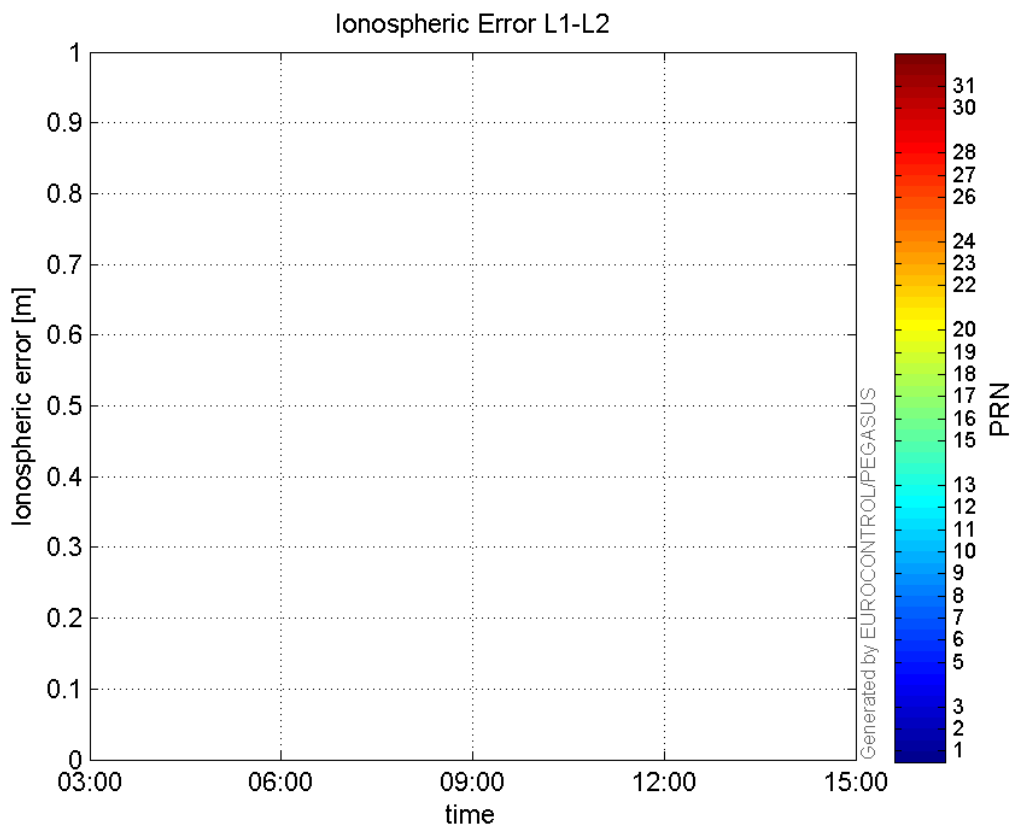


**GEO CNo:**



**dual frequency**

**Ionospheric Error L1-L2:**



### Parameters

#### system

Name	Section	Value
name	system	GNSS_Solution
version	system	4.8.4.0
input_prefix	system	D:/PegasusDateJob/job/2016_04_14EGNOS615/02_Convertor/02_Convertor
output_prefix	system	D:/PegasusDateJob/job/2016_04_14EGNOS615/03_GNSS_Solution/03_GNSS_Solution_sol

#### settings

Name	Section	Value
ref_lat	settings	50.439
ref_lon	settings	30.4297
ref_alt	settings	215.271
smoothing	settings	yes
smoothing_constant	settings	100
smoothing_max_gap	settings	10
smoothing_max_divergence	settings	3
min_elevation	settings	5
aad_model	settings	a
output_range_file	settings	yes
sbas_prn	settings	120
gnss_mode	settings	sbas

#### results

Name	Section	Value
init_lat	results	50.439

<b>init_lon</b>	results	30.4297
<b>init_alt</b>	results	227.0497
<b>mi_numbers</b>	results	0